



GE Monogram

General Electric Company
Appliance Park, Louisville, KY 40225

Service Bulletin

**GE MONOGRAM REFRIGERATORS
ZIS36 & ZIS48 MODELS SINCE 1992
ZIS42 MODELS SINCE 1993
DEFLECTION OF BOTTOM CASE HINGE
BOTTOM HINGE KIT WR49X10022**

REF 12-00

July 2000

INSTALLATION INSTRUCTIONS FOR BOTTOM HINGE KIT WR49X10022

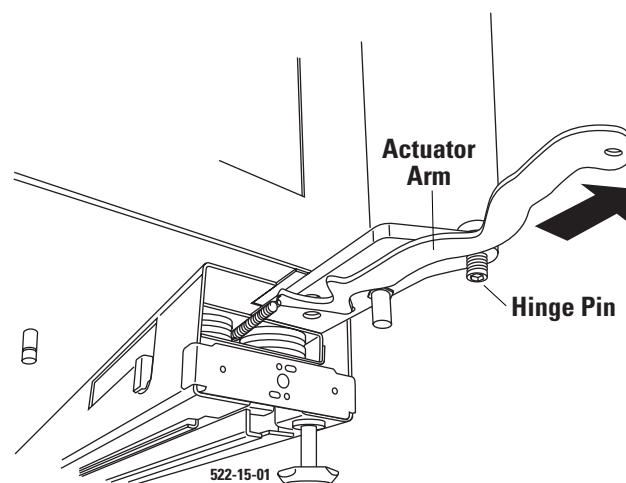
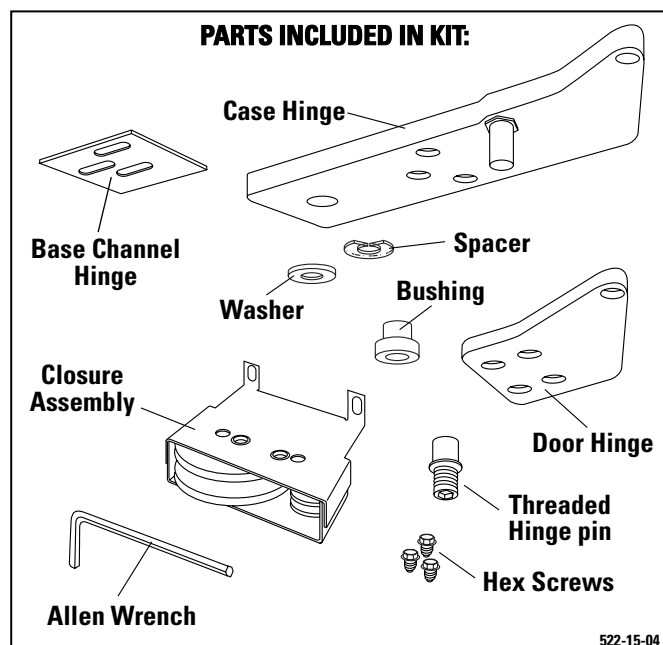
On Monogram models with 2 piece hinge (separate door and case hinge), deflection of the bottom case hinge may cause misalignment of doors, non-engagement of light, fan, and interlock switches. This may be caused by excessive weight from the door panels or the food load.

To correct the problem GE has developed Bottom Hinge Kit WR49X10022. This kit includes a thicker and longer case hinge which will reduce deflection and allow easier height adjustment of the door.

Note: Bottom hinge kit WR49X10022 replaces refrigerator door hinge kit WR49X401

Installation Instruction Remove Door

1. Open fresh food refrigerator door 90°.
2. Remove actuator arm bolt.
3. Release actuator arm spring from retainer and pull arm through the rollers.
4. Remove screws on top door hinge to allow the top door hinge to disengage from top case hinge.
5. Lift door from bottom hinge pin.

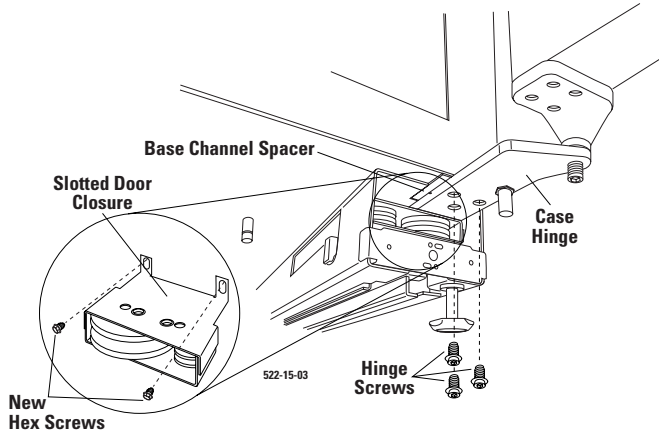


Remove Door Closure

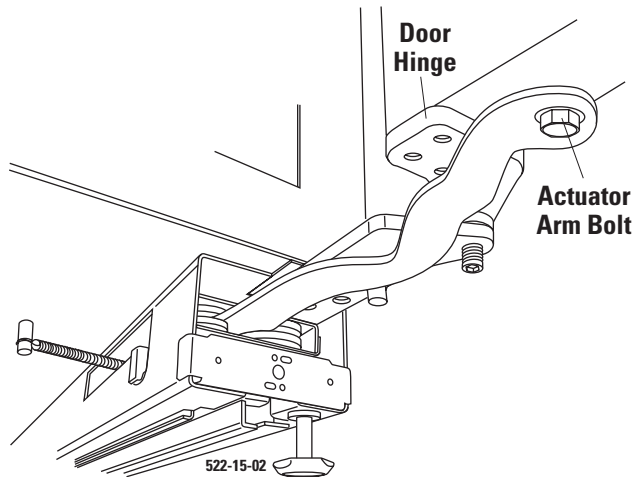
1. Remove 3 bottom case hinge T-20 screws.
2. Remove fresh food refrigerator door closure.

Install Case Hinge

1. Install the closure assembly using the 1/4" hex head screws included in the kit. Do not fully tighten the screws so that the actuator arm can be easily leveled.
2. Install new case hinge, make sure base channel spacer is properly located on new hinge.



3. Reinstall actuator arm through fresh food refrigerator closure assembly and reattach spring.



Remove Bottom Door Hinge

1. Remove old bottom door hinge and replace with new bottom door hinge.

Assemble Door to Cabinet

1. Place door over new threaded hinge pin and bushing.
2. Place top hinge into top case hinge.
3. Tighten screws.

Height Adjustment of Fresh Food and Freezer Doors

1. Using Allen wrench, raise fresh food door to align with freezer door if necessary.
2. If freezer door is lower than fresh food door use spacer to raise freezer door level with fresh food door.

Level Door Closure

1. Install actuator arm parallel to the bottom of door. Use additional spacers if necessary.
2. Tighten the fresh food closure assembly screw. Make sure spring is not catching on the slot in the base channel.
3. Open door completely, to make sure actuator arm does not come in contact with threaded hinge pin.