



Smart Drive[®] Electronic Washing Machine

Models

GWL11

IWL12

GWL12



PRODUCTS

Brand Fisher & Paykel

Voltage 110-115V 60Hz

Model **Product Code (Phase 6 - Series 11)**

GWL11	96151
-------	-------

Model **Product Code (Phase 6 - Series 12)**

IWL12	96154, 96192
-------	--------------

Model **Product Code (Phase 6 - Series 12)**

GWL12	96187
-------	-------

Fisher & Paykel Appliances Inc

27 Hubble, Irvine
California, CA92618
USA

Telephone: 949 790 8900

Facsimile: 949 790 8911

Email: parts.order@FisherPaykel.com

CONTENTS

TOP DECK AND ELECTRONICS	6
WRAPPER	10
AGITATOR AND HOSES	12
INNER AND OUTER BOWLS AND PUMP	14
MOTOR	16
NOTES	19

GUIDE TO USING THIS MANUAL

The model(s) and/or series covered by this manual are listed on the front cover.

The information detailed in this manual is subject to change without notice. The latest version is indicated by the reprint date and replaces any earlier editions.

The front cover picture shows the type of product and may not necessarily be an exact image of the models covered by the manual.

Part References

Where a Model is shown, the part is exclusive to the Model(s) stated. Common parts relating to a part reference are applicable to all other Model(s) which use the particular item.

Kit Parts

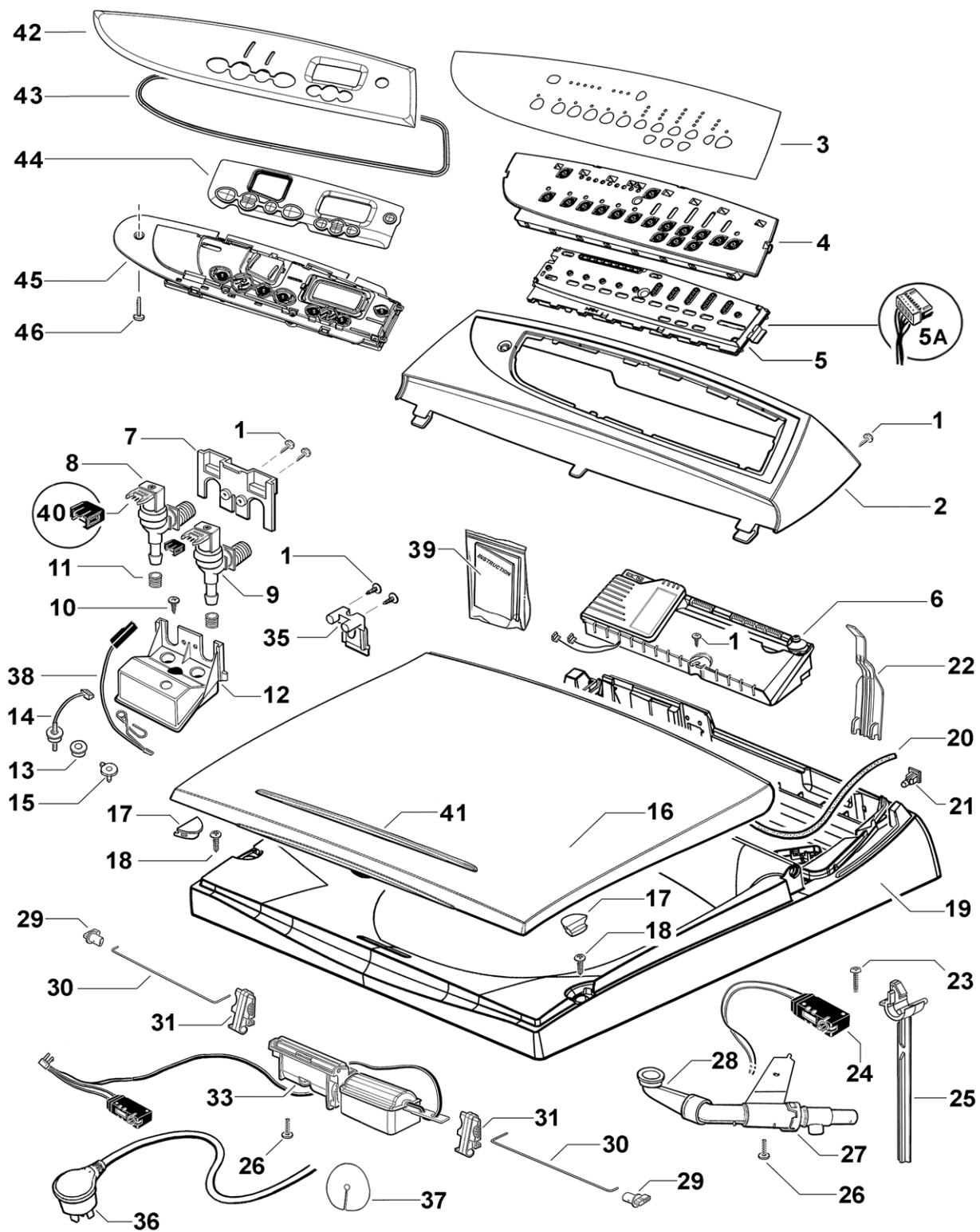
The components shown in *italics with a part number* are those parts in the kit which are available also as separate items. In addition, some parts may be supplied with this kit which are not available as separate items and are therefore either not listed or a part number is not shown against the part description in this manual.

All details relating to Technical Bulletins or Notes are shown on a dedicated page. The Technical Bulletin Number shown relates to the bulletin version which is produced for the Global Service Centres.

Parts List Key

NOT USED	As a part, indicates the diagram part reference is not used in this manual.
#	Beside the part number, indicates the part is no longer available.
<i>italics</i>	Kit components or parts included shown in <i>italics</i> , refer above notes: Kit Parts
*	Indicates a technical bulletin or note exists for the part or part reference.
NI	As a part reference, indicates the part is not illustrated on the diagram.

TOP DECK AND ELECTRONICS

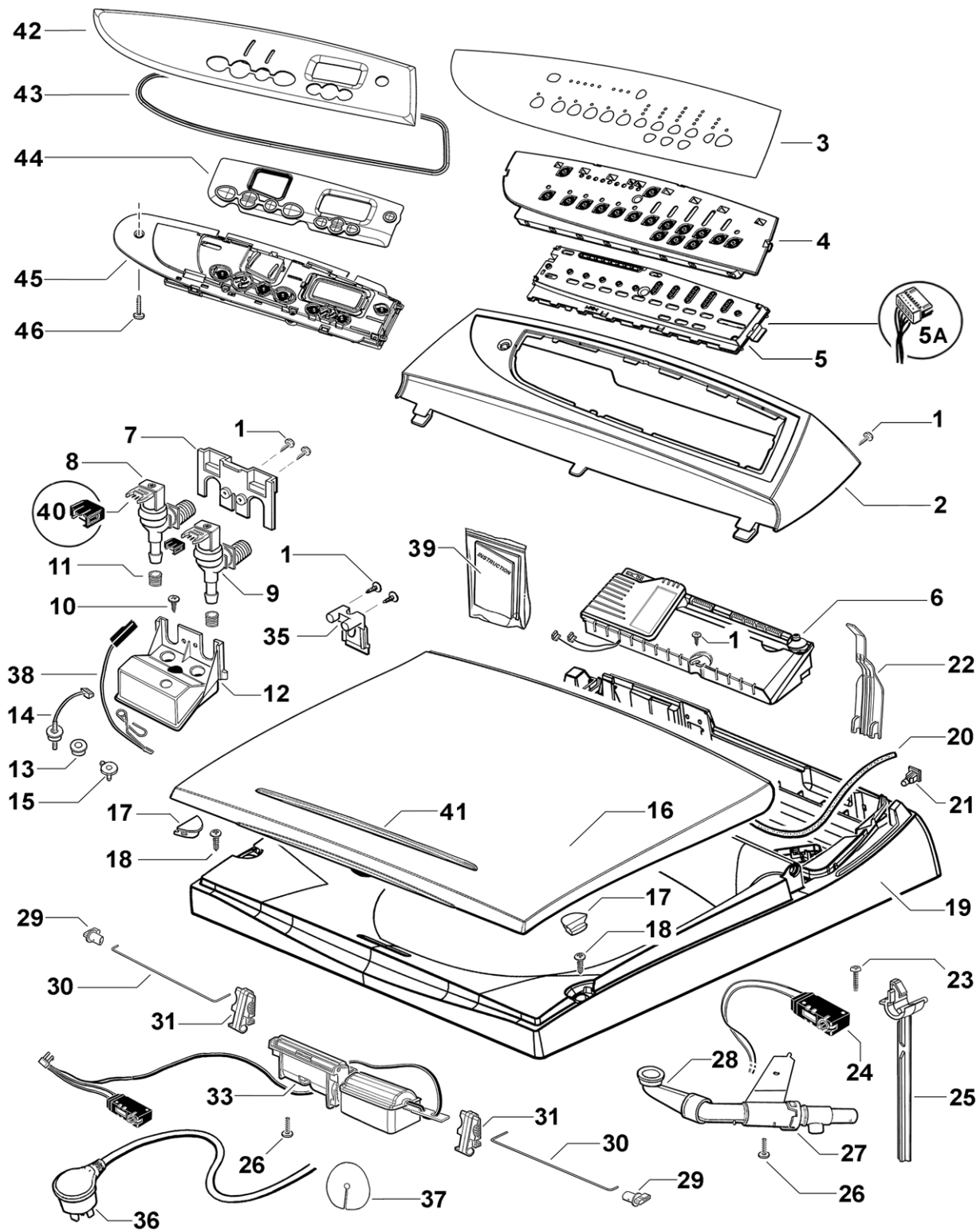


TOP DECK AND ELECTRONICS

REF	PART	DESCRIPTION	MODEL
1	611933P	SCREW ST 8X5/8 TA MTS PH ZNPL (PKT 10)	
2	420115	CONSOLE PRINTED GWL11	
3	420068	PANEL TOUCH GWL11 US FP WH ecosmart	96151
	420807	PANEL TOUCH GWL12 US FP WH ecosmart	96187
4	426819	INSERT CONSOLE GW11	
5	420605P	DISPLAY GW11 Supersedes 420090P	
5A	420176	HARNESS DISPLAY GW11	GW11
6	420094USP	CONTROLLER SD11 120V ECO	
7	425339	BRACKET VALVE SD2	
8	420238P	VALVE INLET PROPORTIONAL 24V 16L NH	(Yellow Body)
	<i>Includes 425251</i>	SEAL INLET VALVE	
9	420237P	VALVE INLET DIGITAL 24V 10L NH	(Yellow Body)
	<i>Includes 425251</i>	SEAL INLET VALVE	
10	* 611986P	SCREW ST 8X20MM HILO PAN PH X1(PKT 10)	
11	425251	SEAL INLET VALVE	
12	420845	KIT CHAMBER INLET ASSY SD200	
	<i>Includes 420416</i>	SEAL CHAMBER INLET BLANK	
	<i>Includes 426752</i>	SEAL THERMISTOR SS	
13	426752	SEAL THERMISTOR SS	
14	479193P	KIT THERMISTOR & SEAL UL	
	<i>Includes 426949</i>	THERMISTOR ASSY SD200 UL	
	426752	SEAL THERMISTOR SS, 479165 LEAFLET THERMISTOR SD200	
15	420416	SEAL CHAMBER INLET BLANKING (Supersedes 479181)	
	479181	KIT THERMISTOR BLANK	
	<i>Includes 426752</i>	SEAL THERMISTOR SS, 426759 BLANK THERMISTOR 4.0/4.5mm (SS by 420416)	
16	426796P	LID L11 WHITE PKD	
17	426793P	BUFFER LID SD11 (PKT 2)	
18	611812P	SCREW ST 10X5/8 MSH PAN PH SS430 (PKT 10)	
19	426778	TOP DECK L11 WHITE	
20	426273	GASKET CONSOLE FOAM CUT	
21	422402	NUT SNAP IN SPIRE P0071/05/01/00	
22	420133	COVER WIRING TOPDECK SD11	
23	611801P	ST M3X18 PLASTITE PAN PH ZNPL (PKT 10)	
24	420313	KIT SEALED OOB SWITCH ASSY	T/Bulletin WM036
25	426474	LEVER BALANCE CUPPED	
26	611808P	SCREW ST 8X1/2 PAN PH SS 403S (PKT 10)	
27	420143	NOZZLE ASSY SD11	
28	425974	ELBOW NOZZLE SD11	

Continued next page

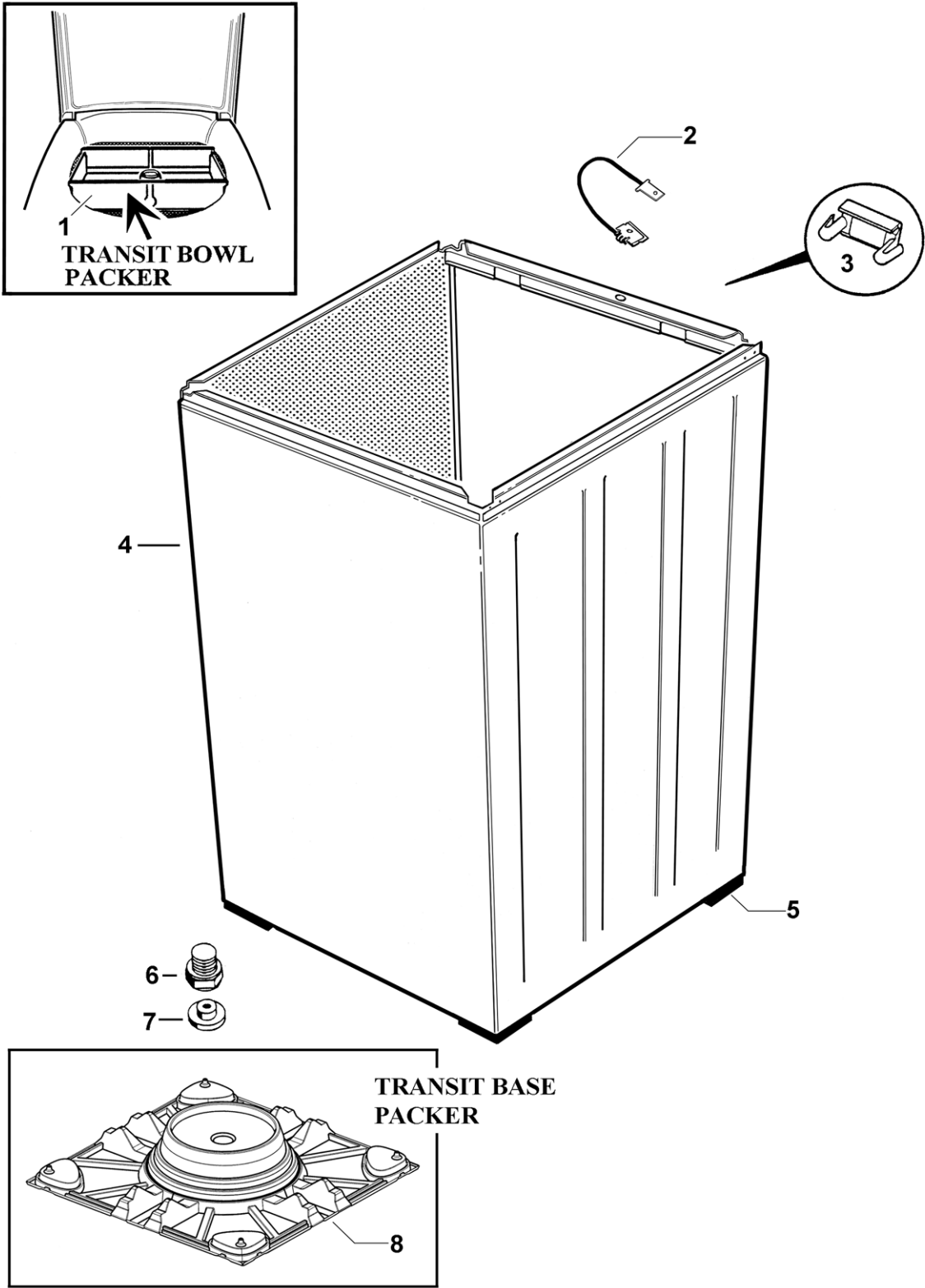
TOP DECK AND ELECTRONICS



TOP DECK AND ELECTRONICS

REF	PART	DESCRIPTION	MODEL
29	426825	HINGE LID SD11	
30	No Longer Required	SPRING LID TORSION SD11 (was 420040)	
31	No Longer Required	RETAINER TORSION LID SD11 (was 420039)	
33	420429	LIDLOCK & HARNESS ASSY	T/Bulletin WM037
35	426113	CLAMP MAINS HARNESS UL LT GREY	
36	426699	CORD SET UL SD200	
37	420262	SHIELD MAINS HARNESS	
38	426975	HARNESS EARTH THERMISTOR 4.0	
39	420600	LEAFLET SERVICE SUMMARY US-CA (supercedes 420354)	
40	420479P	CLIP RETAINING RAST CONNECTOR INLET VALVE (PKT 2)	
41	420109	GRIP LID SD11	
42	420155	FACIA ASSY PRINTED IW11, IWL12 ECO	96154
		FACIA ASSY PRINTED IWL12 ECO	96192
43	420099	SEAL FACIA IWL12	
44	426785	BUTTONS IWL12	
45	420722P	MODULE IW DISPLAY 120V PH6 (supercedes 420374P)	
46	611803P	SCREW ST 8X25 T25 PAN PH (PKT 10)	

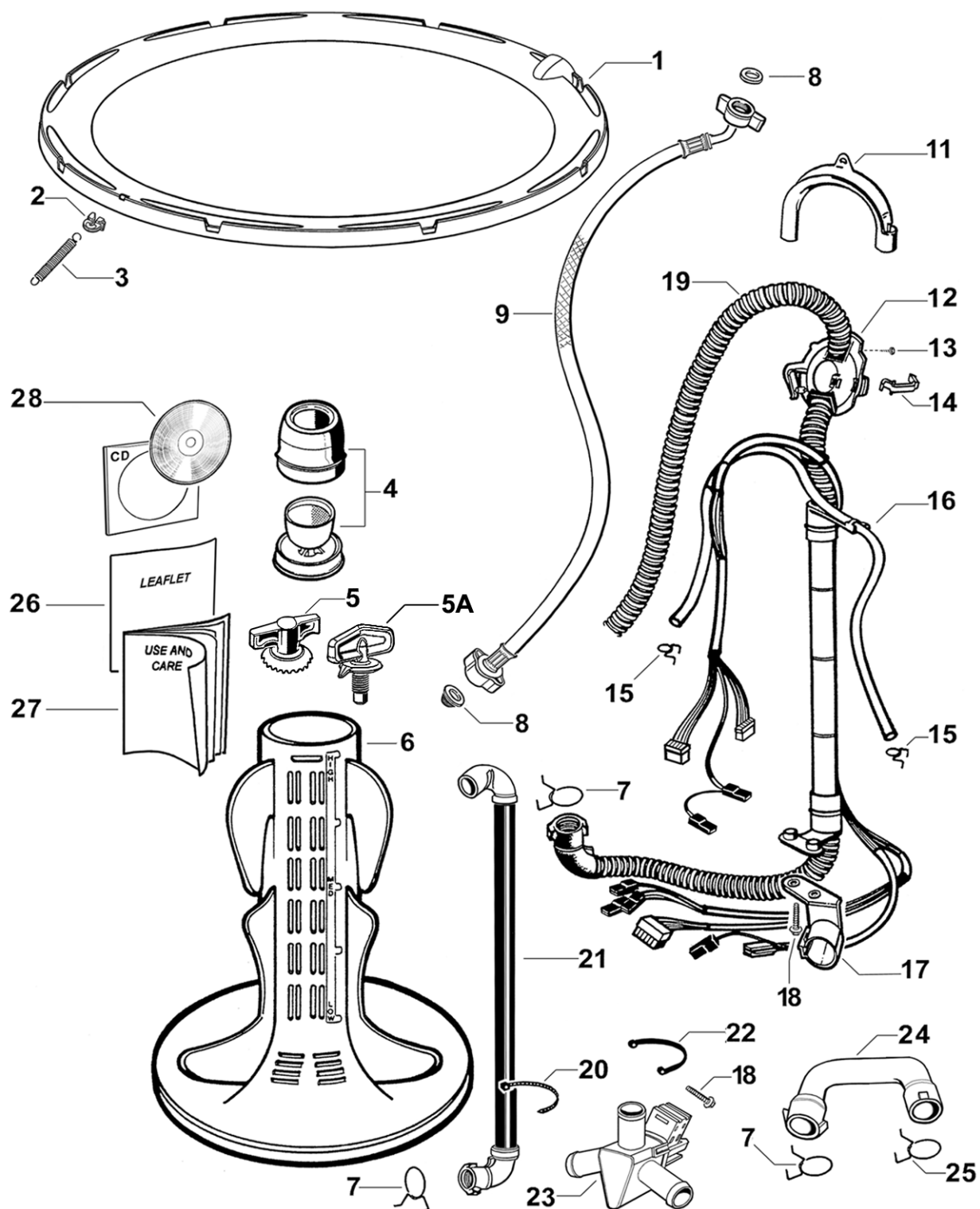
WRAPPER



WRAPPER

REF	PART	DESCRIPTION	MODEL
1	420071	PACKER BOWL L11	
2	426512	WIRE CABINET EARTH SD200	
3	426058	COVER EARTH CLIP	
4	426663P	WRAPPER ASSY 7 PKD	
	<i>Includes 426058</i>	<i>COVER EARTH CLIP</i>	
	<i>Includes 426153</i>	<i>FOOT LEVELLING</i>	
	<i>Includes 426621</i>	<i>WIRE CABINET EARTH CLIP</i>	
	<i>Includes 426657</i>	<i>CORNER CABINET BOTTOM</i>	
5	426657	CORNER CABINET BOTTOM	
6	472969P	KIT FOOT & INSERT	
	<i>Includes 426153</i>	<i>FOOT LEVELLING</i>	
	<i>Includes 426154</i>	<i>INSERT FOOT</i>	
7	479183	INSERT FOOT (PKT X4)	
	<i>Includes 426154</i>	<i>INSERT FOOT</i>	
8	420051	PACKER BOTTOM L VAC FORMED	

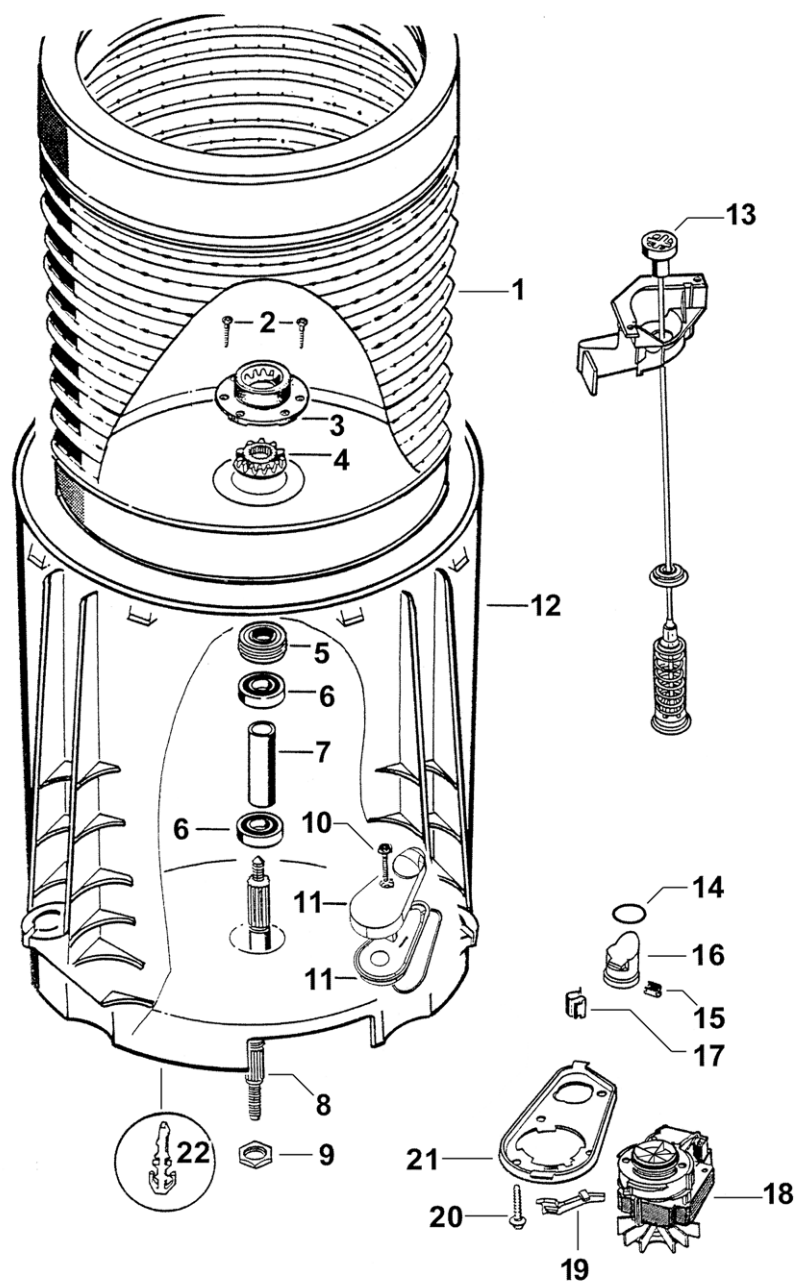
AGITATOR AND HOSES



AGITATOR AND HOSES

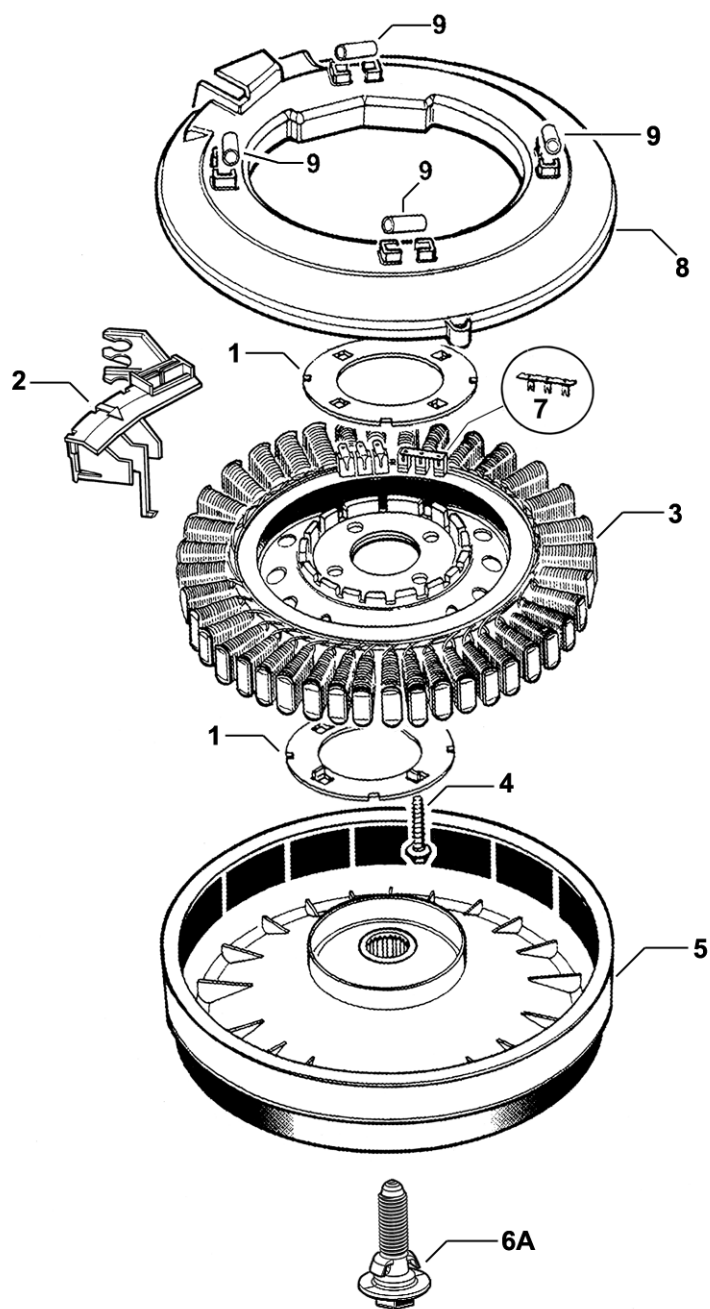
REF	PART	DESCRIPTION	MODEL
1	426809P	NECK RING ASSY L11	
	<i>Includes 426812</i>	NECK RING L11 LT GREY	
	<i>Includes 420197</i>	CLIP BIAS SPRING	
	<i>Includes 420122</i>	SPRING BIAS	
2	420197	CLIP BIAS SPRING SD11	
3	420122	SPRING BIAS SD11	
4	426993P	DISPENSER ASSY WHITE	
5	425059	NUT AGITATOR	
5A	420665	BOLT AGITATOR	T/Bulletin WM040
6	425025P	AGITATOR PKD	
7	422500	CLAMP HOSE 031.5	
8	420016P	KIT FILTER / CONNECTOR SEAL (2 EACH)	
	<i>Includes 420016</i>	FILTER INLET MIFLEX (2)	
	<i>Includes 420017</i>	CONNECTOR SEAL MIFLEX (2)	
9	420079	HOSE INLET ASSY USA NH BRASS MIFLEX	
	<i>Includes 420016</i>	FILTER INLET MIFLEX	
	<i>Includes 420017</i>	CONNECTOR SEAL MIFLEX (2)	
	420871	HOSE INLET ASSY USA NH PLASTIC MIFLEX (Replaces 420079)	
	<i>Includes 420016</i>	FILTER INLET MIFLEX	
	<i>Includes 420017</i>	CONNECTOR SEAL MIFLEX (2)	
11	422808	GUIDE OUTLET HOSE	
12	426455	FIXTURE DRAIN HOSE	
13	611933P	SCREW ST 8X5/8 TA MTS PH (PKT 10)	
14	425487	CLIP FIXTURE DRAIN HOSE	
15	425611	CLAMP HOSE 08.5 TALL GRIP	
16	425299	TUBE PRESSURE SENSOR SD2	
17	425503	BRACKET DRAIN HOSE	
18	425150P	SCREW ST 1/4 X 1" PLASTITE (PKT 10)	
19	420126	HOSE & HARNESS ASSY SD11 ECO	
20	621954	TIE T30R 150X3.5 HAMER	
21	426863	HOSE RECIRC ASSY SD10	
22	426958	CLAMP DIVERter VALVE	
23	426862P	VALVE DIVERter SD10	
	<i>Includes 420301</i>	COVER DIVERter VALVE	
	<i>Includes 420311</i>	LABEL – "DO NOT REMOVE COVER FROM VALVE"	
24	426695	HOSE PUMP DIVERter	
25	422503	CLAMP HOSE 028	
26	479314	CARD WARRANTY REGISTRATION ALL PRODUCTS & MKTS	
27	420653	BOOK USE & CARE GW11 US-CA Supercedes 420590, 420294	GWL11
	420654	BOOK USE & CARE IW12 US-CA Supercedes 420590, 420350	IWL12
28	420353	COMPACT DISC GW-IW12 US	

INNER AND OUTER BOWLS AND PUMP



INNER AND OUTER BOWLS AND PUMP

REF	PART	DESCRIPTION	MODEL
1	426099P	BOWL (BASKET) INNER 700 ASSY PKD	
	<i>Includes 425080</i>	<i>SPLINE DRIVEN</i>	
	<i>Includes 425131P</i>	<i>SCREW CLUTCH X10 PKD</i>	
	<i>Includes 425596</i>	<i>SPLINE DRIVE ASSY</i>	
2	425131P	SCREW CLUTCH X10 PKD	
3 & 4	479318	KIT SPLINE DRIVE	
	<i>Includes 425080</i>	<i>SPLINE DRIVEN</i>	
	<i>Includes 425596</i>	<i>SPLINE DRIVE ASSY</i>	
5	425009P	LIPSEAL PKD	
6	425006P	BEARING 6005LLU PKD	
7	425007	SPACER BEARING	
8	425013P	SHAFT LONG	
	420794P	SHAFT SHORTENED - KIT	T/Bulletin WM040
	<i>Includes 420664</i>	<i>BOLT ROTOR</i>	
	<i>Includes 420665</i>	<i>BOLT AGITATOR</i>	
	<i>Includes 479359</i>	<i>INSTRUCTION SHEET</i>	
9	425171	NUT BEARING	
10	425162P	SCREW COVER X10 PKD	
11	479188P	KIT DRAIN CAP HOOD & IMPELLOR	
	<i>Includes 425115</i>	<i>SEAL PUMP CAP</i>	
	* <i>Includes 420319</i>	<i>IMPELLOR INSERT ASSY</i>	
	<i>Includes 426939</i>	<i>CAP PUMP RIBBED</i>	
	<i>Includes 426940</i>	<i>HOOD PUMP</i>	
12	425925P	BOWL (BASKET) OUTER ASSY 700 PKD (Notch to be cut out for Recirculating Hose)	
	<i>Includes 425006</i>	<i>BEARING 6005LLU</i>	
	<i>Includes 425007</i>	<i>SPACER BEARING</i>	
	<i>Includes 425009</i>	<i>LIP SEAL</i>	
	<i>Includes 425115</i>	<i>SEAL PUMP CAP</i>	
	<i>Includes 425162</i>	<i>SCREW COVER</i>	
	<i>Includes 426939</i>	<i>CAP PUMP RIBBED</i>	
	<i>Includes 426940</i>	<i>HOOD PUMP</i>	
13	426750P	SUSPENSION ASSY SQUASHED 4 PACK	
14	425149	SEAL O RING PRESSURE CHAMBER	
15	613710	CLIP EDGE	
16	425097	PLUG PRESSURE CHAMBER	
17	613709	CLIP PIPE UNITED CARR FT19280-ZNPL	
18	420325P	PUMP DRAIN 110V 60Hz	
	* <i>Includes 420319</i>	<i>IMPELLOR INSERT ASSEMBLY</i>	
19	425128	CLIP PUMP RETAINING	
20	425150P	SCREW ST 1/4 X 1"PLASTITE X 10 PKD	
21	425028	BRACKET PUMP	
22	472867	CLIP WIRING OUTER BOWL	

MOTOR

DWG000043

MOTOR

REF	PART	DESCRIPTION	MODEL
1	426174P	CLAMP PLATE STATOR LANCED (PAIR)	
2	420296P	SENSOR ROTOR POSITION MK 2	
	<i>Includes 472867</i>	<i>CLIP WIRING OUTER BOWL</i>	
3	426454P	STATOR SD200 PKD	
4	426835P	SCREW STATOR PKT 10	
5	425620P	ROTOR FERRITE PKD	
6	425016	NUT ROTOR	
6A	420664	BOLT ROTOR	T/Bulletin WM040
7	425104	BRIDGE TERMINAL	
8	425961	SHIELD MOTOR SD UL	
9	426145	TUBE BUFFER SHIELD UL	

NOTES

TOP DECK AND ELECTRONICS

Technical Bulletins

611986P WM030

AGITATOR AND HOSES

Technical Bulletins

420665 WM040

INNER AND OUTER BOWLS AND PUMP

Technical Bulletins

420319 WM033

420794 WM040

MOTOR

Technical Bulletins

420664 WM040