

# **GE Profile Bottom Mount DualDrawer Refrigerator**

**PGCS1NFXSS Non-Dispenser Series**  
**PGCS1PJXSS Dispenser Series**  
**PGSS5NFXSS Non-Dispenser Series**  
**PGSS5PJXSS Dispenser Series**



**imagination at work**

*GE Consumer & Industrial Training Team*

**Feb 2008**

# Features

Similar to Profile Bottom Freezer but with:



- Bowed Doors & Drawers
- 2 Freezer Drawers
- Hydroformed Handles
- Stainless Steel Models only
- Dispenser & Non-dispenser Models
- Center Mullion with Heater
- LED modular lighting in fresh food section on dispenser models only
- Icemaker/Ice storage in the Bottom Basket
- Icemaker Cover & new Ice Level Switch
- Automatic QuickIce Function
- Non-Energy Star Rated



GE imagination at work

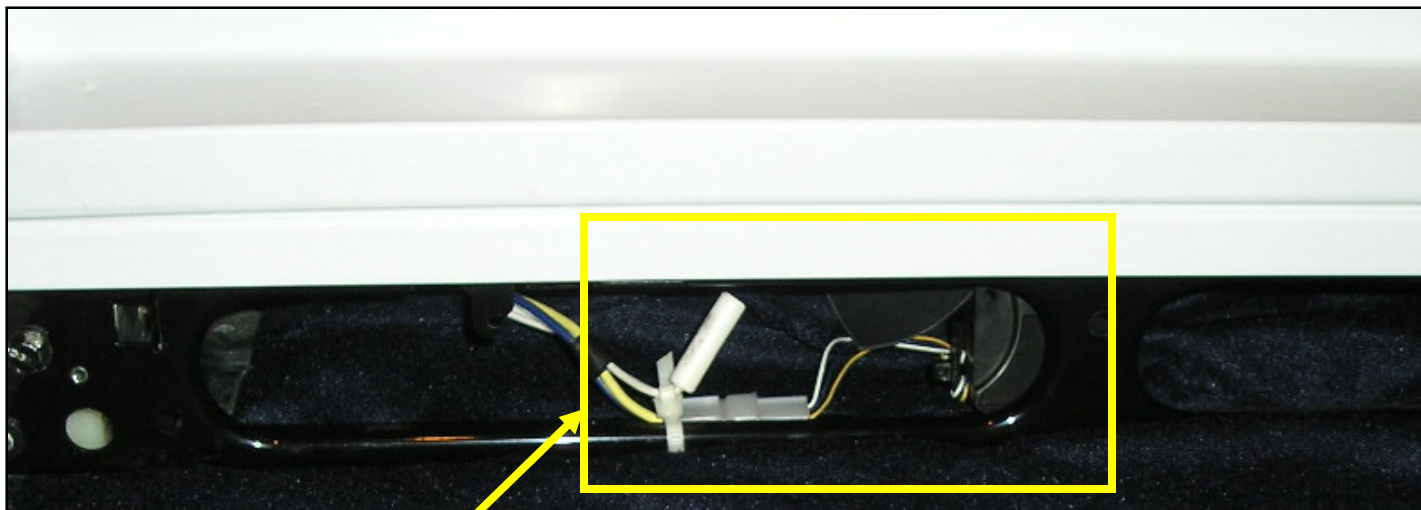
# Demo Mode



- To enter Demo, press & hold HOME & HELP for 3 seconds.
- To exit, repeat the above – **disconnecting power will NOT exit Demo.**



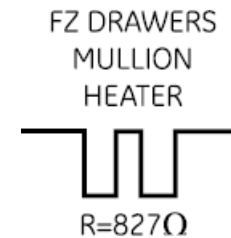
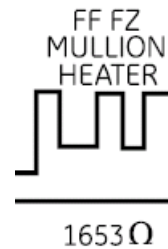
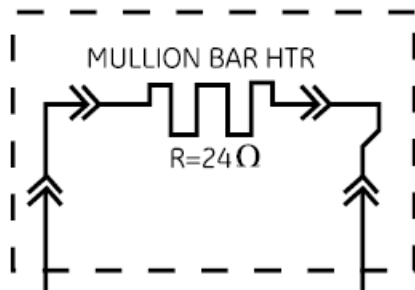
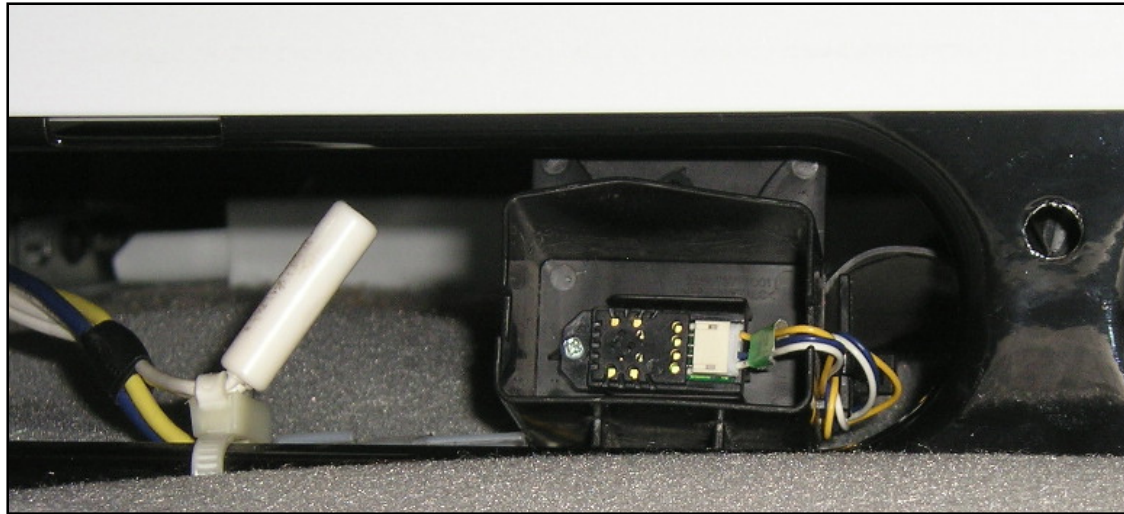
# Room Ambient Thermistor



- Main Board uses data from Ambient Thermistor to recalculate target temperatures & results in proper food storage under adverse environmental conditions.
- No adjustments are made if the Ambient Thermistor fails.



# Humidity Sensor



- Main Board uses data from Humidity Sensor to adjust wattage of mullion heaters.
- If Energy Saver is "ON" – main board ignores data from Humidity Sensor & heaters will be off except Freezer DD Mullion Heater (set to 3.4W).
- Measure ~1 to 3.6VDC between J4-3 & J5-6 to test Sensor (no resistance test).
- Measure ~5VDC between J4-3 & J5-5 to test main board output.

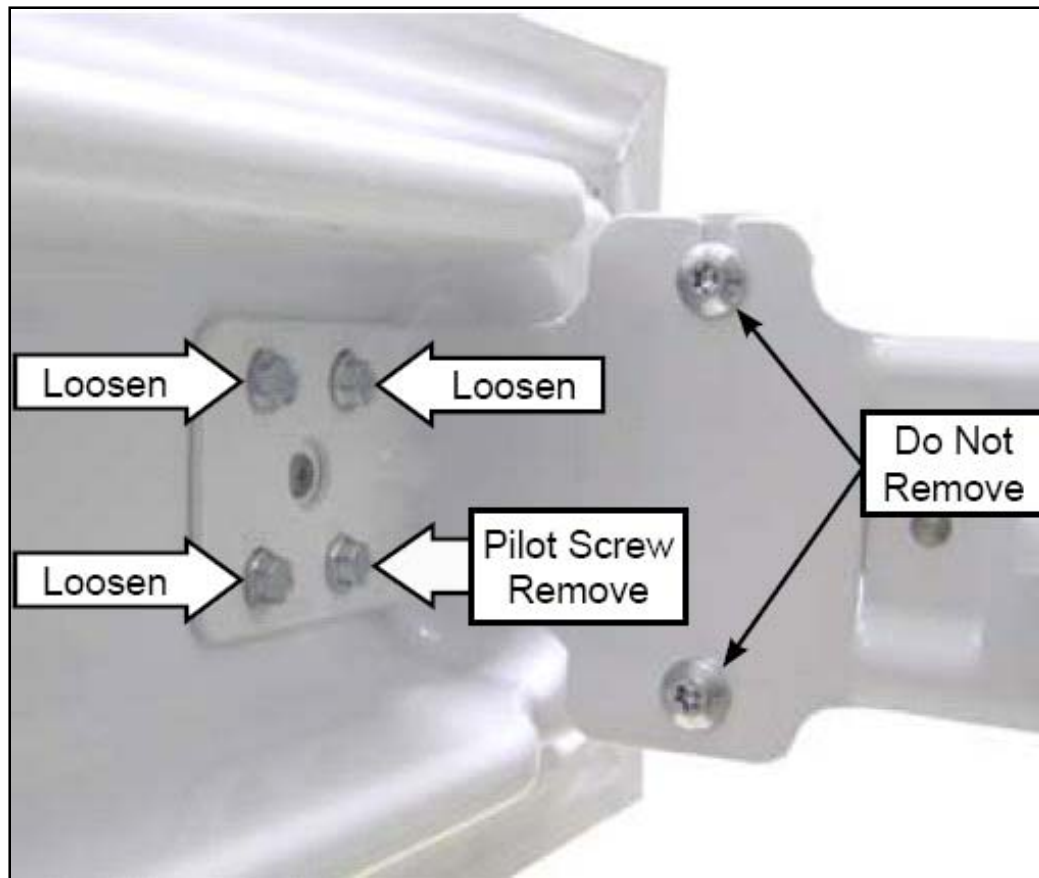
# Freezer Drawers



- New DualDrawer design gives added versatility for food storage & access.
  - Top Drawer is 1/3 of space & Bottom Drawer is 2/3 of space.
    - PGCS1 has approx. 6.1 cubic feet of space.
    - PGSS5 has approx. 7.5 cubic feet of space.



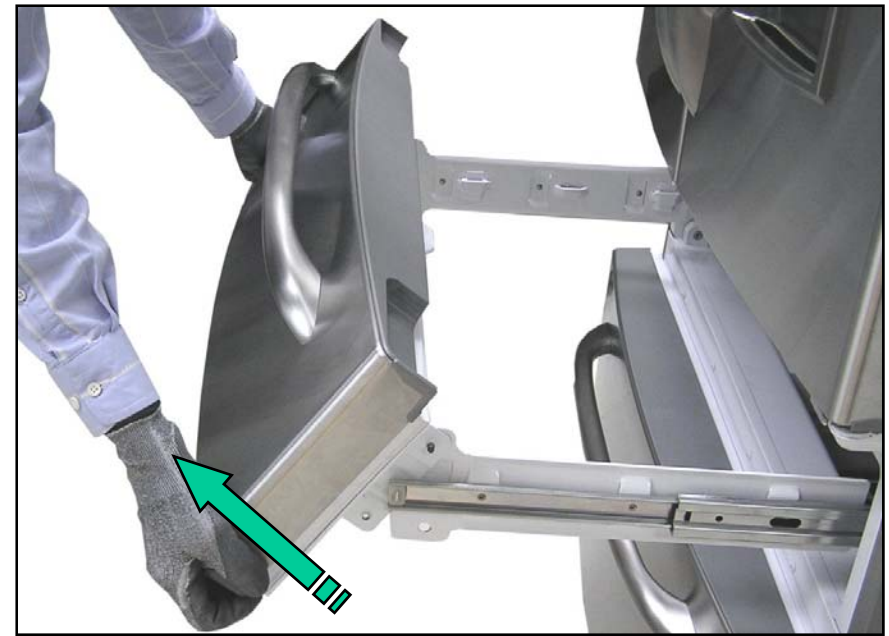
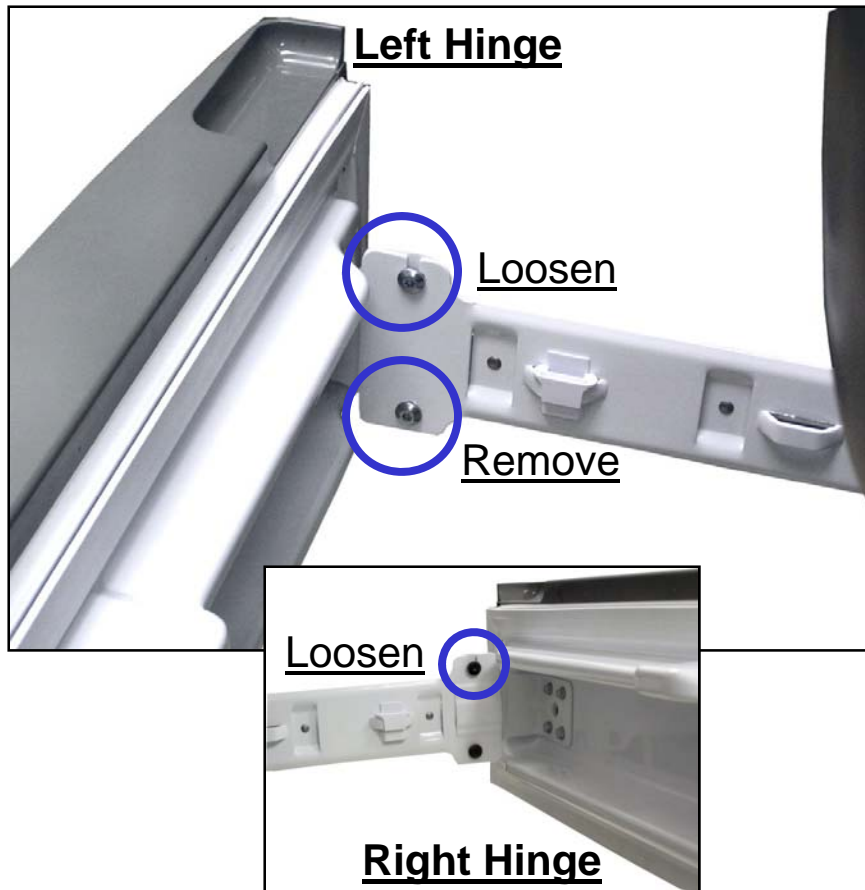
# Freezer Upper Drawer Adjustment



- Loosen three 10mm hex head screws.
- Remove the pilot 10mm hex head screw.
- Make necessary adjustment & retighten three 10mm hex head screws.
- **DO NOT** replace the pilot 10mm hex head screw.



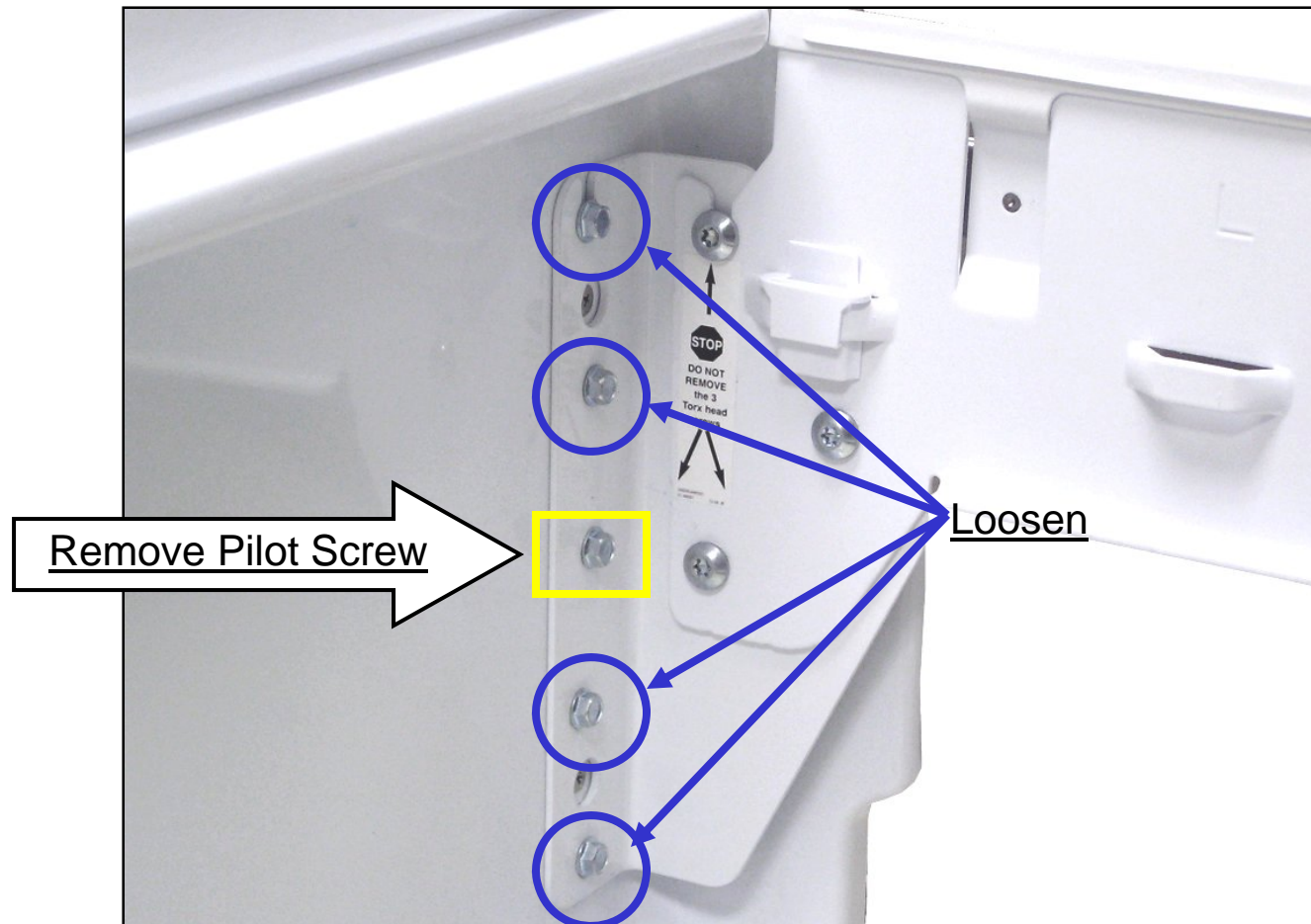
# Freezer Upper Drawer Removal



- Loosen top Torx (T30) screw from left side, right side is a T30 shoulder type.
- Remove bottom Torx (T30) screw from each side.
- Then lift drawer off rails.



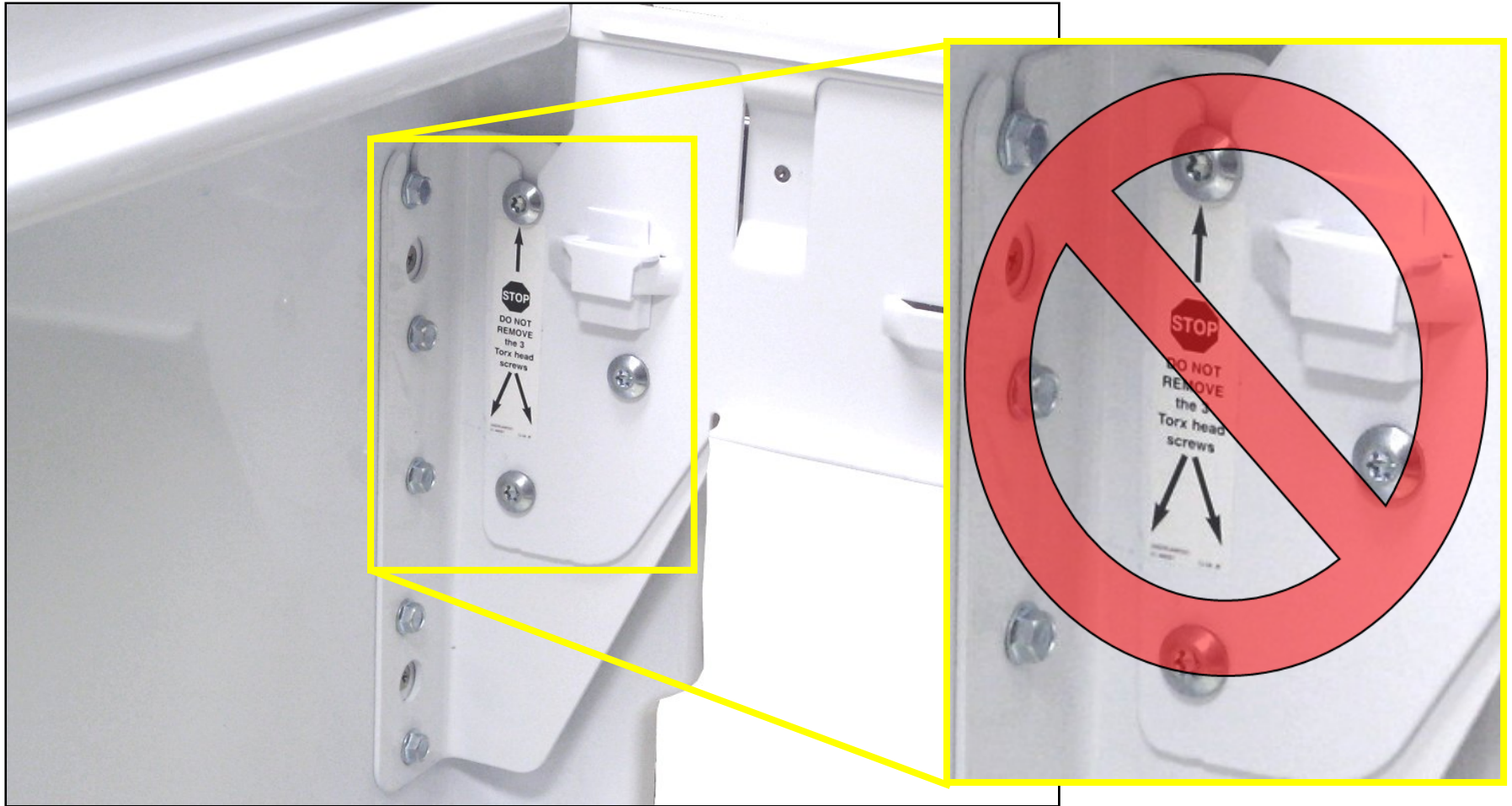
# Freezer Lower Drawer Adjustment



- Loosen the top two & bottom two 10mm hex head screws on each hinge.
  - Remove the pilot 10mm hex head screw on each hinge.
- Make the necessary adjustments & retighten eight 10mm hex head screws.
  - **DO NOT** replace the pilot 10mm hex head screws.



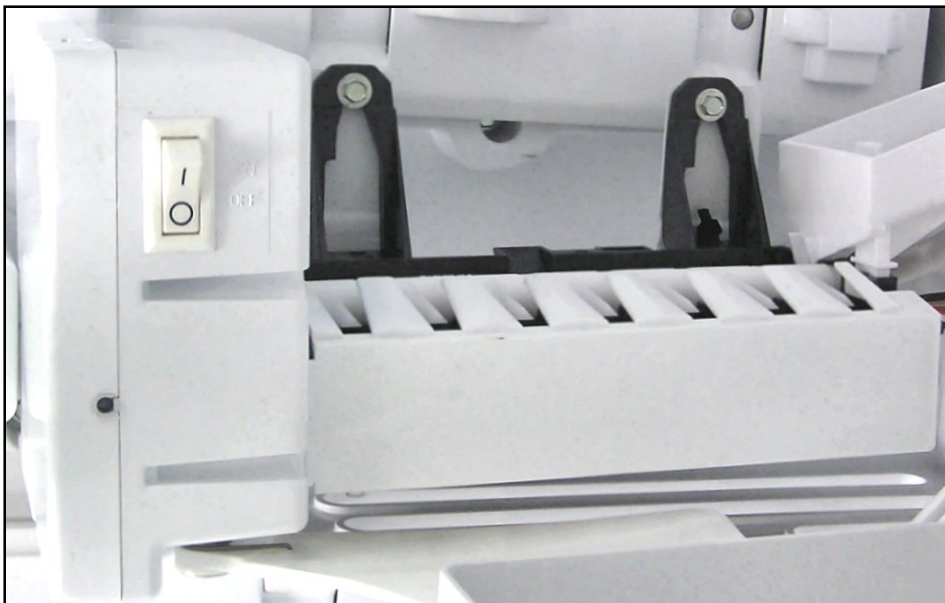
# Freezer Lower Drawer Removal



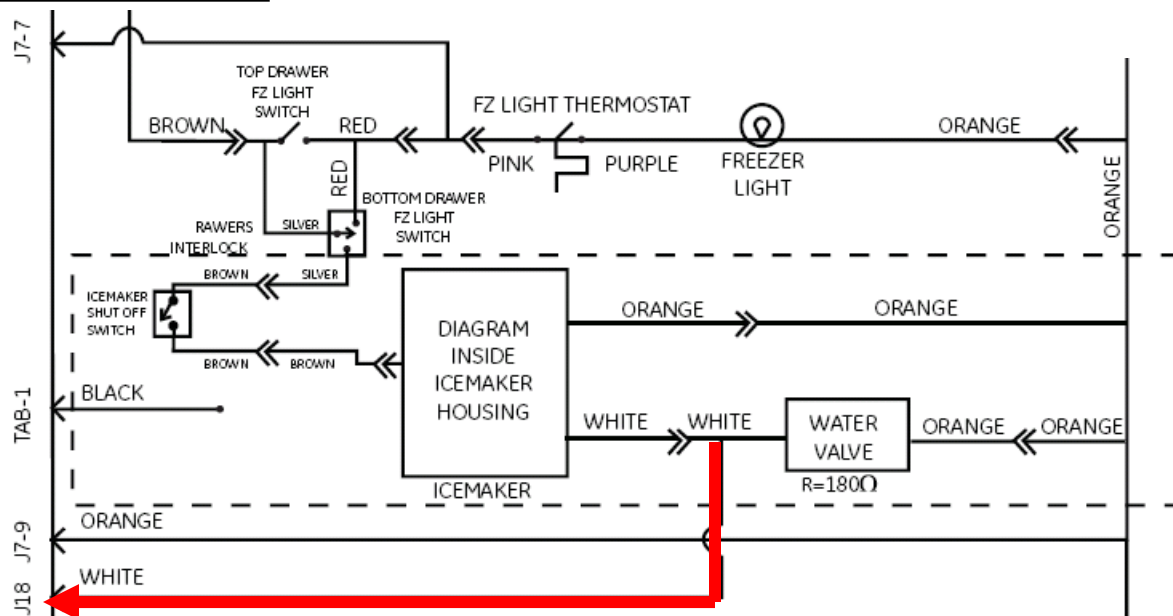
- Loosen the top 10mm hex head screw on each hinge.
- Remove the other four 10mm hex head screws on each hinge.
- **DO NOT** remove any of the Torx screws in the side rails.
- Lift the drawer front up & off the slide assemblies.



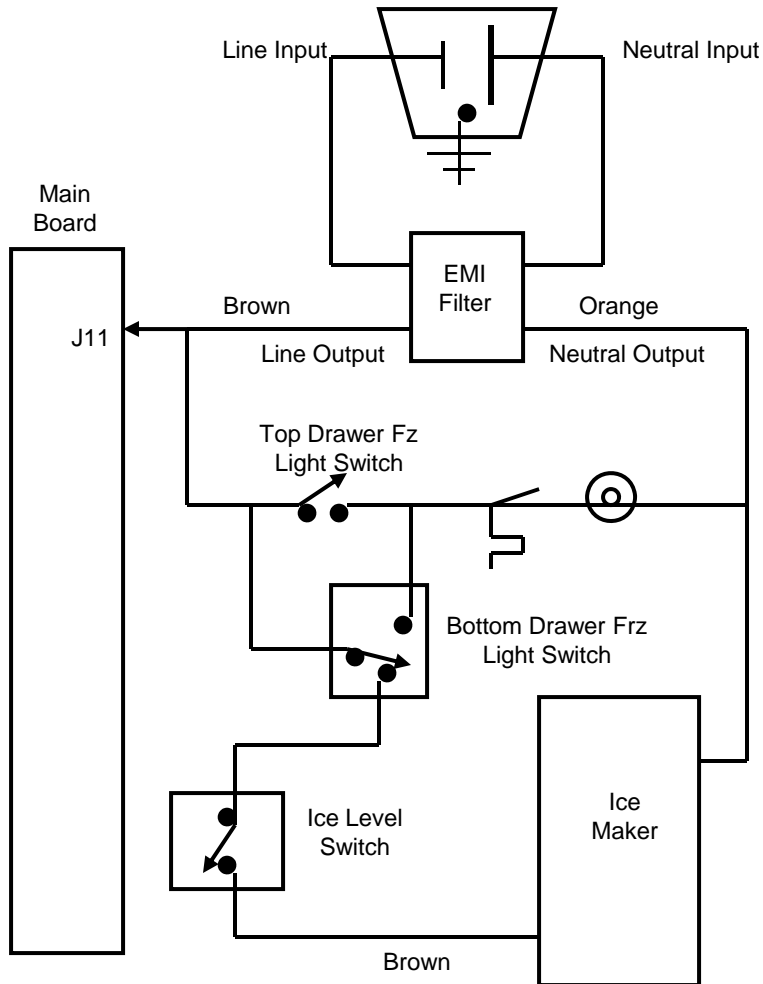
# Automatic QuickIce



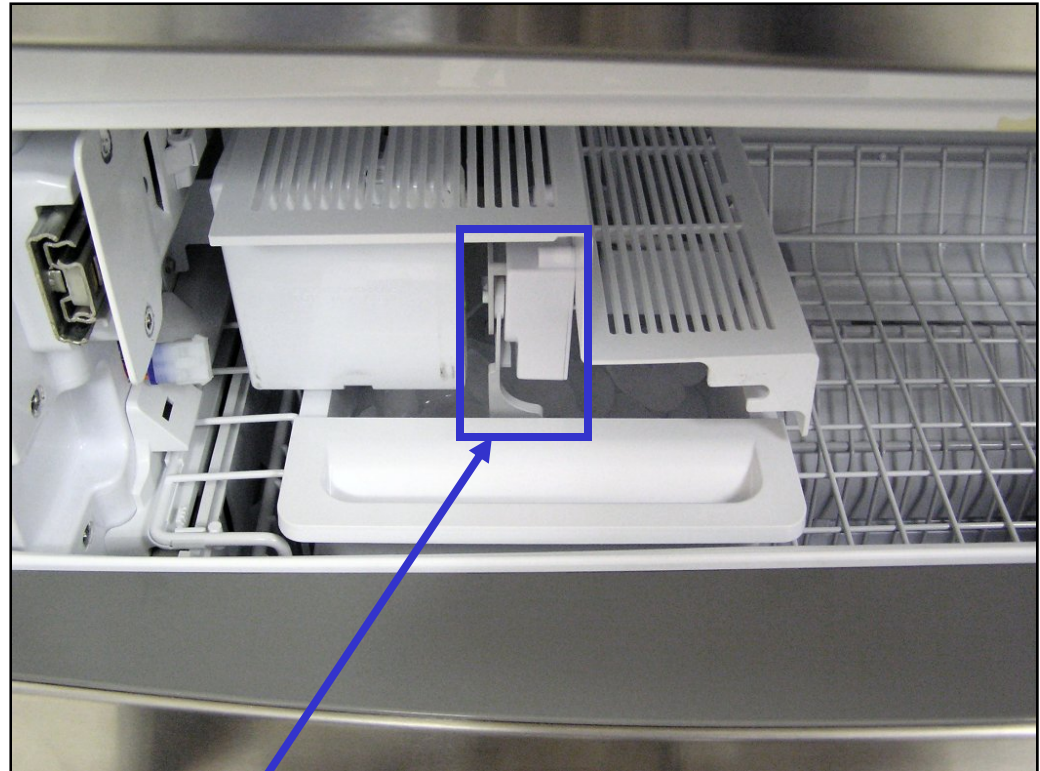
- When the IM calls for water, the main control board will turn on the evaporator fan for 2 hours if the compressor is off.



# Ice Level Switch



**Note:** both freezer drawers closed & ice bin empty.



- The IM Level Switch is there to keep the ice from overflowing the basket.
- The IM Feeler Arm is now a back-up for ice production.