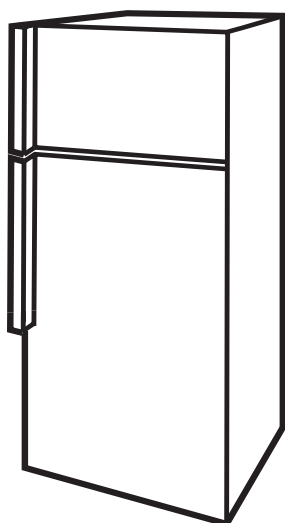




GE Consumer Products

TECHNICAL SERVICE GUIDE

**2003 Upgrade
Louisville Built
No Frost Top Freezer
18-19 Cu. Ft. Refrigerator**



"P" MODEL SERIES:

ETS19__P
GTH18__P
GTL18__P
GTS18__P
GTS19__P
HTS18__P
STS18__P





IMPORTANT SAFETY NOTICE

The information in this service guide is intended for use by individuals possessing adequate backgrounds of electrical, electronic, and mechanical experience. Any attempt to repair a major appliance may result in personal injury and property damage. The manufacturer or seller cannot be responsible for the interpretation of this information, nor can it assume any liability in connection with its use.

WARNING

To avoid personal injury, disconnect power before servicing this product. If electrical power is required for diagnosis or test purposes, disconnect the power immediately after performing the necessary checks.

RECONNECT ALL GROUNDING DEVICES

If grounding wires, screws, straps, clips, nuts, or washers used to complete a path to ground are removed for service, they must be returned to their original position and properly fastened.

GE Consumer Products

Technical Service Guide

Copyright © 2003

All rights reserved. This service guide may not be reproduced in whole or in part in any form without written permission from the General Electric Company.

Table of Contents

Components	7
Clean Steel™	10
Control Features	6
Evaporator Fan Motor	8
Fresh Food Control Panel	7
Illustrated Parts Catalog	11
Introduction	3
Kick Panel	10
Nomenclature	5
Schematic	20
Technical Data	4
Warranty	22
Wiring Diagram	21

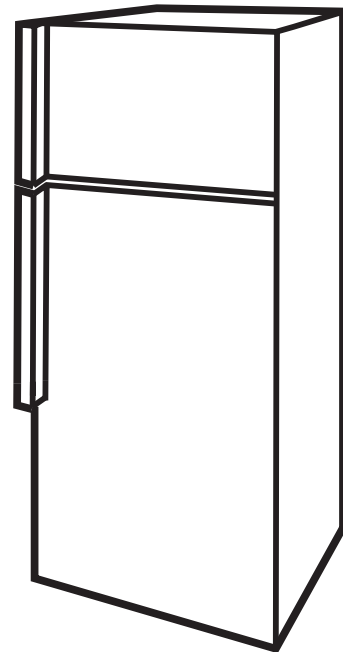
Introduction

General

The GE Louisville Built, No Frost Top Freezer, 18-19 Cu. Ft. Refrigerator models are being introduced with a new Clean Steel™ door.

Other features include:

- A redesigned fresh food control panel.
- A redesigned fan motor mounting.
- A replaceable kick plate on non-freezer light equipped models.



Technical Data

ELECTRICAL SPECIFICATIONS

Temperature Control (Position 5).....	24.5-12.5°F
Defrost Control	8 hrs @ 30 min
Defrost Thermostat58-28°F
Electrical Rating: 115V AC 60Hz	
100V AC 50 Hz	6.5 Amp
Maximum Current Leakage	0.75 mA
Maximum Ground Path Resistance	0.14 Ohms
Energy Consumption	
18'	40KWH/mo
19'	41KWH/mo

NO LOAD PERFORMANCE

Control Position, Fresh Food 5, Freezer 5 and Ambient Temperature of:	70°F	90°F
Fresh Food, °F	34-40	35-39
Frozen Food, °F	(-3) -4	(-3) -3
RunTime, %	20-30	41-53

Note: At the temperature control position of Fresh Food 5, Freezer 5, approximately 90% of the airflow is distributed in the freezer, 10% in the Fresh Food.

REFRIGERATION SYSTEM

Refrigerant Charge (R134a)	Refer to Rating Plate
Compressor	685 BTU/hr
Minimum Compressor Capacity.....	19 inches
Minimum Equalized Pressure	
@70°F.....	52PSIG
@90°F.....	66PSIG

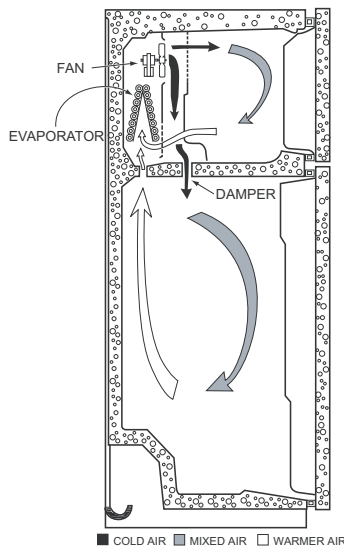
REPLACEMENT PARTS

Condenser Fan Motor	WR60X10044
Evaporator Fan Motor.....	WR60X10057
Defrost Heater	WR51X10031
Relay.....	WR07X0194
Overload	WR08X10046
Temperature Control	WR09X10044
Defrost Thermostat	WR50X10025
Capacitor.....	WR62X0080

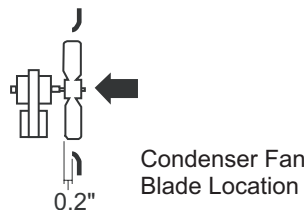
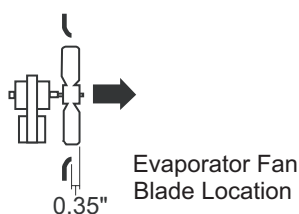
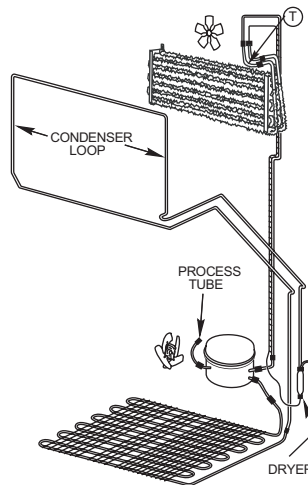
INSTALLATION

Clearance must be provided for air circulation	
AT TOP.....	1-inch
AT SIDES.....	1/8-inch
AT REAR.....	1-inch

AIR FLOW

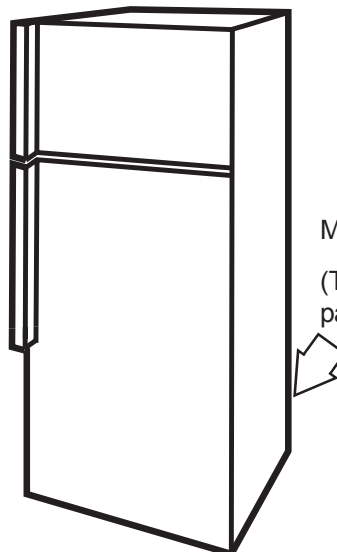
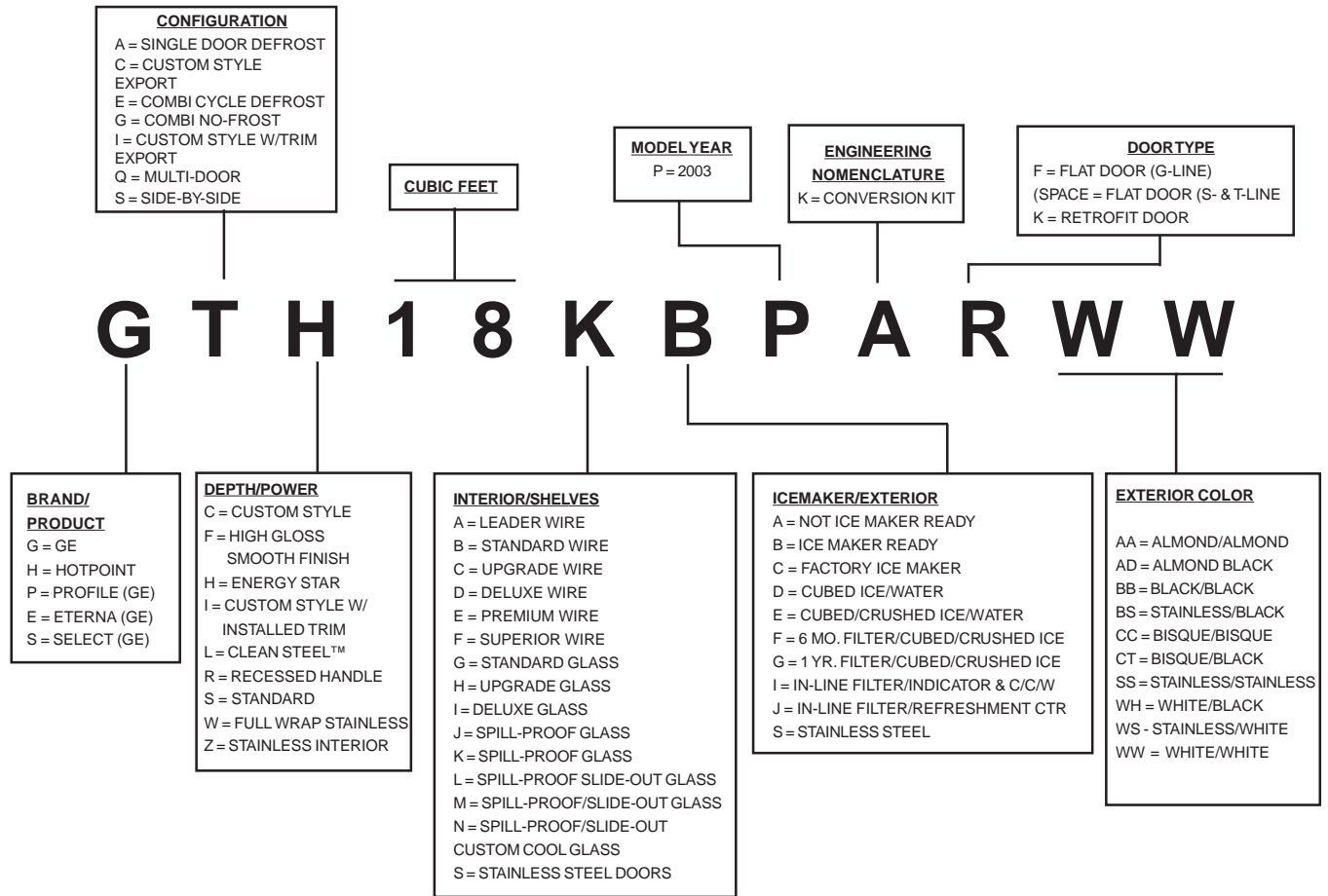


SEALED SYSTEM



Nomenclature

2003 Upgrade, Louisville Built, No Frost Top Freezer, 18-19 Cu. Ft. Refrigerator



Mini-Manual Location
 (Taped to lower back panel of the refrigerator.)

Control Features

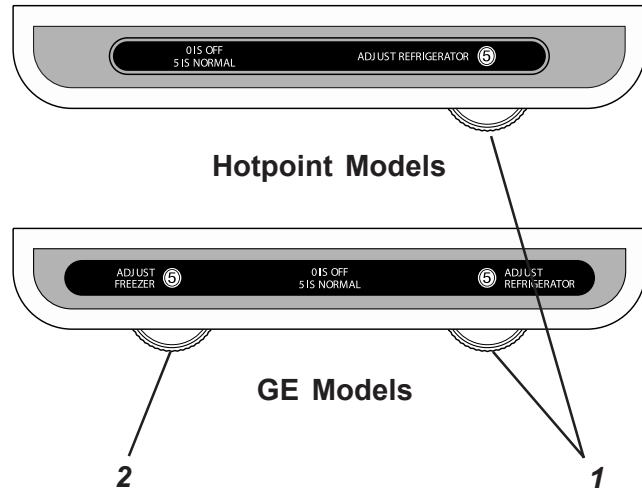
1. Refrigerator Control

Turn the ADJUST REFRIGERATOR control from 9 (HIGHEST) to 0 (OFF) to adjust refrigerator temperature.

2. Freezer Control

Turn the ADJUST FREEZER control from 0 (OFF) to 9 (HIGHEST) to adjust freezer temperature (5 is NORMAL).

Note: There is no ADJUST FREEZER control included on the Hotpoint model. Freezer air distribution is fixed by the position of the baffle plate. If the freezer air should need to be adjusted on the Hotpoint model, it is necessary to adjust the position of the baffle plate manually (see *Components*).



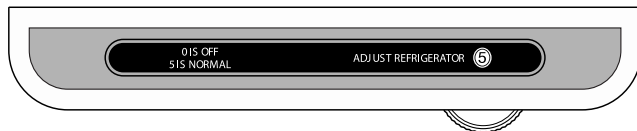
Components

Fresh Food Control Panel

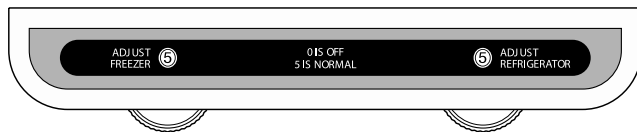
Removal and Replacement

1. Unplug the refrigerator to disconnect power.

Note: The controls on the refrigerator will look like one of the following:

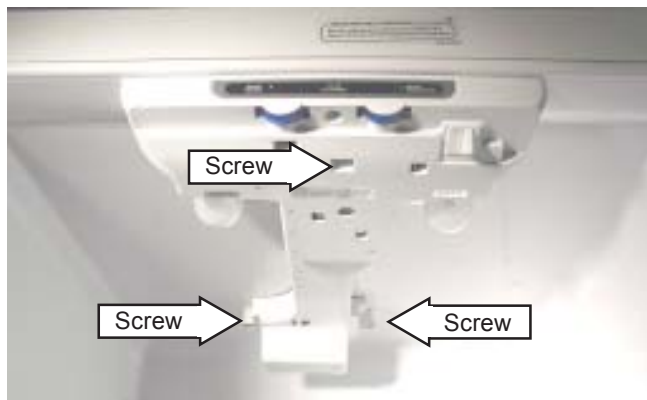


Hotpoint Models

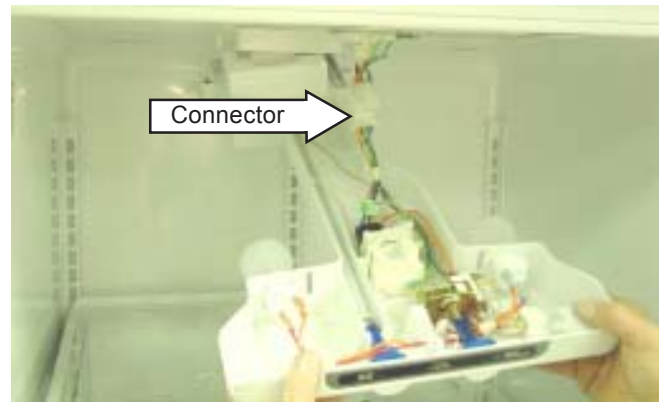


GE Models

2. Remove the two screws from the rear of the control panel housing.
3. Remove the screw from the front center of the control panel housing.

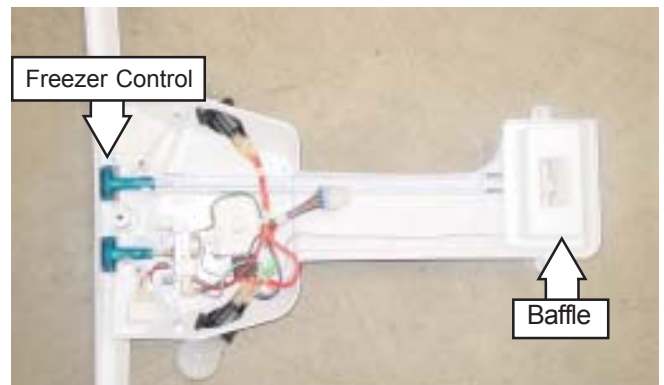


4. Lower the control panel housing, disconnect the electrical connector, and remove the housing.



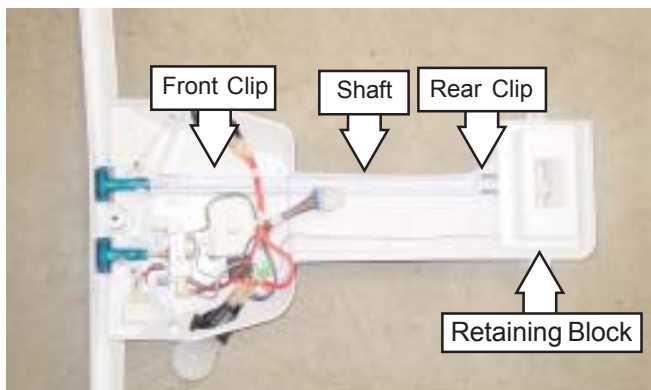
5. Remove the baffle.

Note: There is no ADJUST FREEZER control included on the Hotpoint model. Freezer air flow is fixed by the position of the baffle plate. If the freezer air should need to be adjusted on Hotpoint models, perform steps 12 through 14.



6. Press back the rear retaining clip and lift up the shaft.
7. Pull the shaft end from the shaft retaining hole.
8. Press back the forward retaining clip and lift up the control rod shaft.
9. Remove the control rod shaft and knob.
10. Remove the thermostat retaining block.

(Continued next page)



Note: There is no ADJUST FREEZER control included on the Hotpoint model. Freezer air distribution is fixed by the position of the baffle plate. If the freezer air should need to be adjusted on Hotpoint models, perform steps 12 through 14. (Steps 12 through 14 should only be used if all other temperature checks have been performed and a temperature problem still exists.)

11. Remove the baffle plate from the baffle.



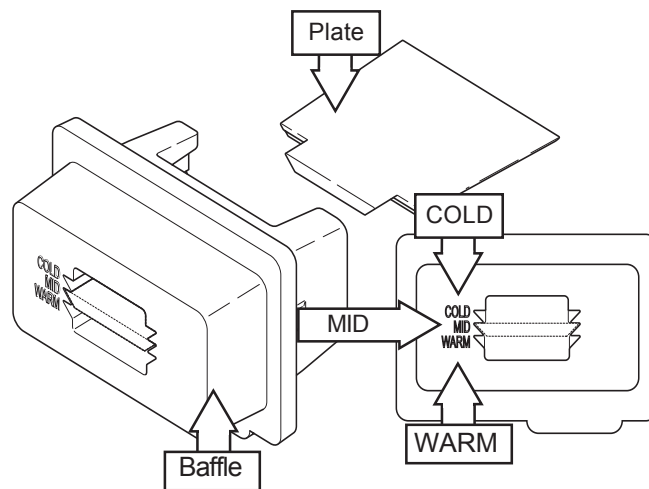
12. Trim the edge of the baffle plate to fit in either the MID or COLD baffle plate slots.

13. To increase freezer temperature slide the baffle plate into the WARM slot.

Note: Inserting the baffle plate into the WARM slot will raise freezer temperature between 3 and 4°F, and lower fresh food temperature between 3 and 4°F.

14. To decrease freezer temperature slide the baffle plate into the COLD slot.

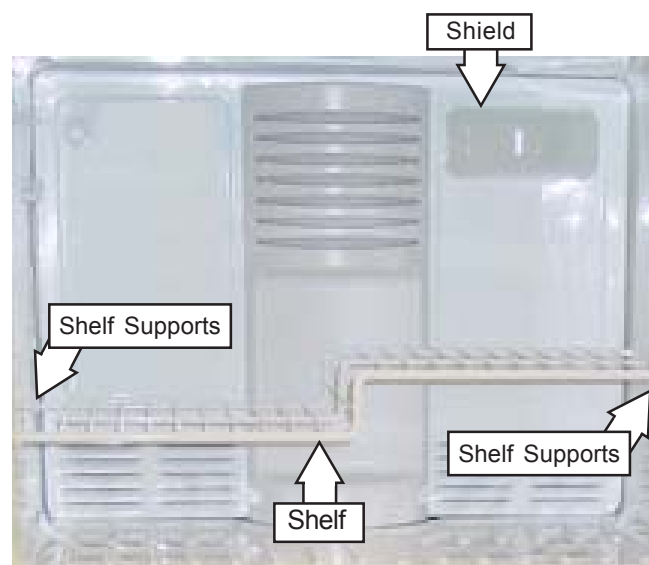
Note: Inserting the baffle plate into the COLD slot will lower freezer temperature between 3 and 4°F, and raise fresh food temperature between 3 and 4°F.



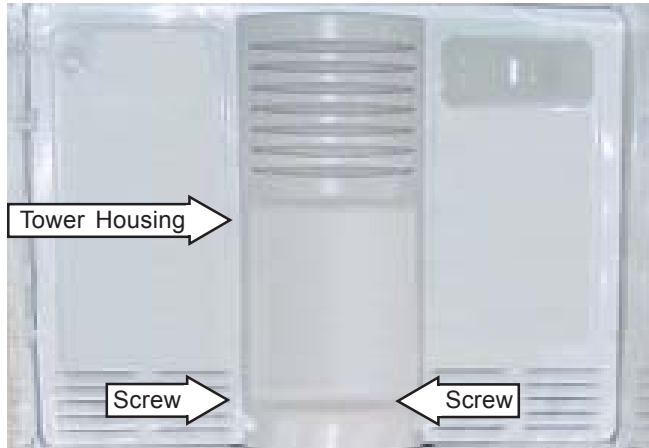
Evaporator Fan Motor

Removal and Replacement

1. Unplug the refrigerator to disconnect power.
2. Lift up the left side of the shelf and slide it left into the center of the shelf supports.
3. Rotate the right side of the shelf up and out of the shelf supports and remove the shelf.
4. Remove the ice maker if installed.
5. Squeeze the top and bottom of the light shield and pull the shield from the evaporator cover.
6. Remove the light bulb from the socket.



7. Remove the 2 screws from the bottom of the tower housing.
8. Lift up and pull the tower housing forward, making sure the bottom notch comes out of and clears the freezer floor.
9. Remove the tower housing.



10. Remove the two screws from the evaporator cover.
11. Remove the two screws from the fan bracket and pull the evaporator cover forward.

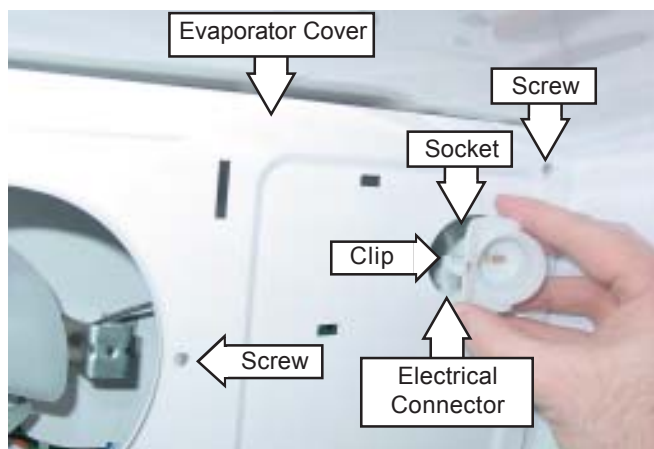
Note: If necessary, bow the evaporator cover outward until it clears the ice maker receptacle.

12. Depress the clip and pull the socket out far enough to access the electrical connector.

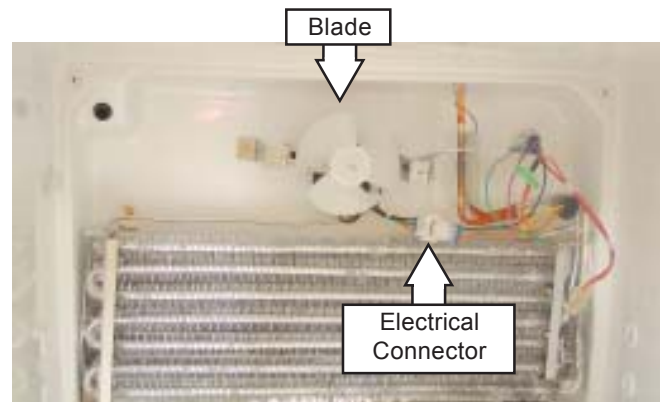
Note: If necessary, reach behind the evaporator cover to access the electrical connector.

13. Disconnect the electrical connector from the light socket and remove the socket.

14. Remove the evaporator cover.



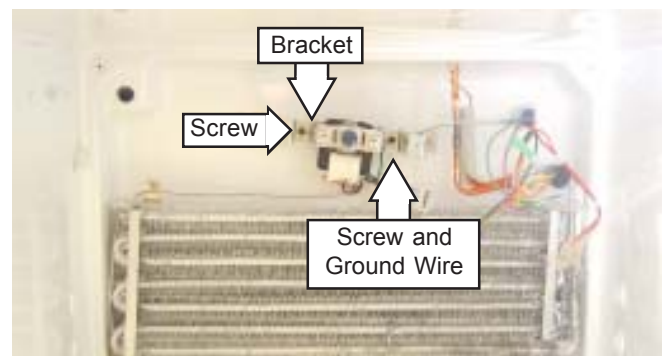
15. Disconnect the electrical connector from the evaporator fan motor.
16. Slide the evaporator fan blade off the motor shaft.



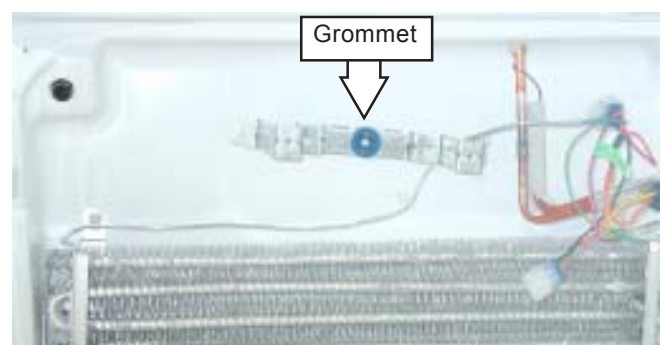
17. Remove the evaporator fan motor screws and grounding wire from the evaporator fan bracket.

18. Remove the front evaporator fan bracket and motor.

19. Remove and retain the front blue isolation grommet from the motor shaft.



20. Make sure the rear blue isolation grommet is seated properly on the motor mounting bracket prior to installation of the new evaporator fan motor.



Kick Panel

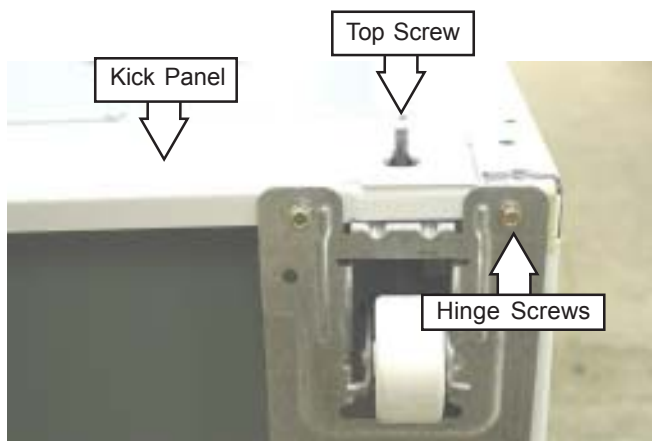
The kick panel on models with no-freezer light is replaceable.

Note: The kick panel on models with a freezer light is replaceable, but not currently cataloged.

Removal and Replacement

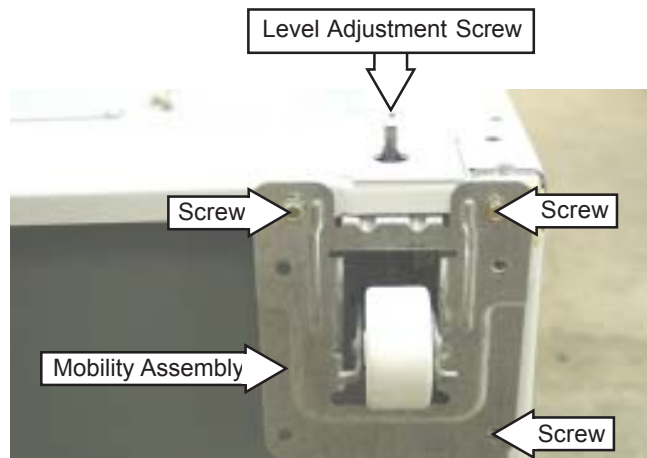
Note: This procedure should be performed by two people.

1. Unplug the refrigerator to disconnect power.
2. Remove shelving from the refrigerator and freezer.
3. Lay the refrigerator on it's back.
4. Remove the 2 hinge screws, hinge, and fresh food door from the refrigerator.
5. Remove the top screw from the same side.
6. Remove the 3 screws from the opposite side of the kick panel.



Note: If necessary, adjust the mobility screw to remove the mobility assembly in steps 7 and 8.

7. Remove the 3 screws and right mobility assembly.
8. Remove the 3 screws and left mobility assembly.



9. Slide out and remove the kick panel.

Note: When installing the kick panel screws, use of an electric screwdriver will aid in the installation.

Clean Steel™

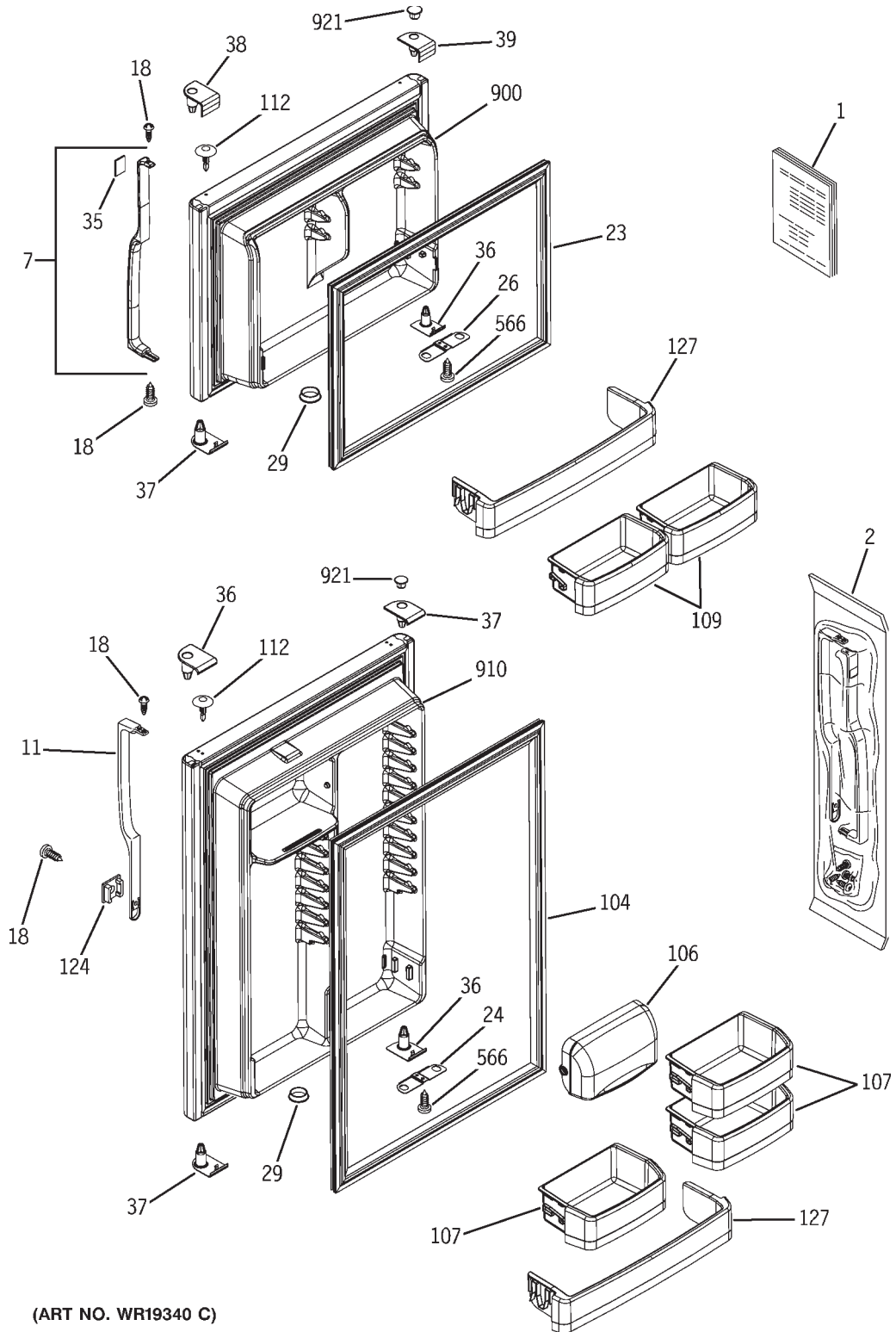
Clean Steel™ is a vinyl-laminated steel similar in appearance to true stainless steel. Clean Steel™ is easier to clean than stainless steel and does not show fingerprints. The material has better scratch resistance and has a galvanized steel substrate to prevent red rust should a scratch occur. Doors are shipped with a protective polyethylene coating to help eliminate/reduce any damage in shipping and delivery to the customer. A touch-up paint is being developed for noncritical areas, but there is currently no appearance repair method for the front face of the door.

A Clean Steel™ surface is cleaned the same way as our current painted surfaces. Use a clean cloth lightly dampened with appliance polish or mild household detergent. Then, use another clean cloth to dry and polish the cleaned surfaces.

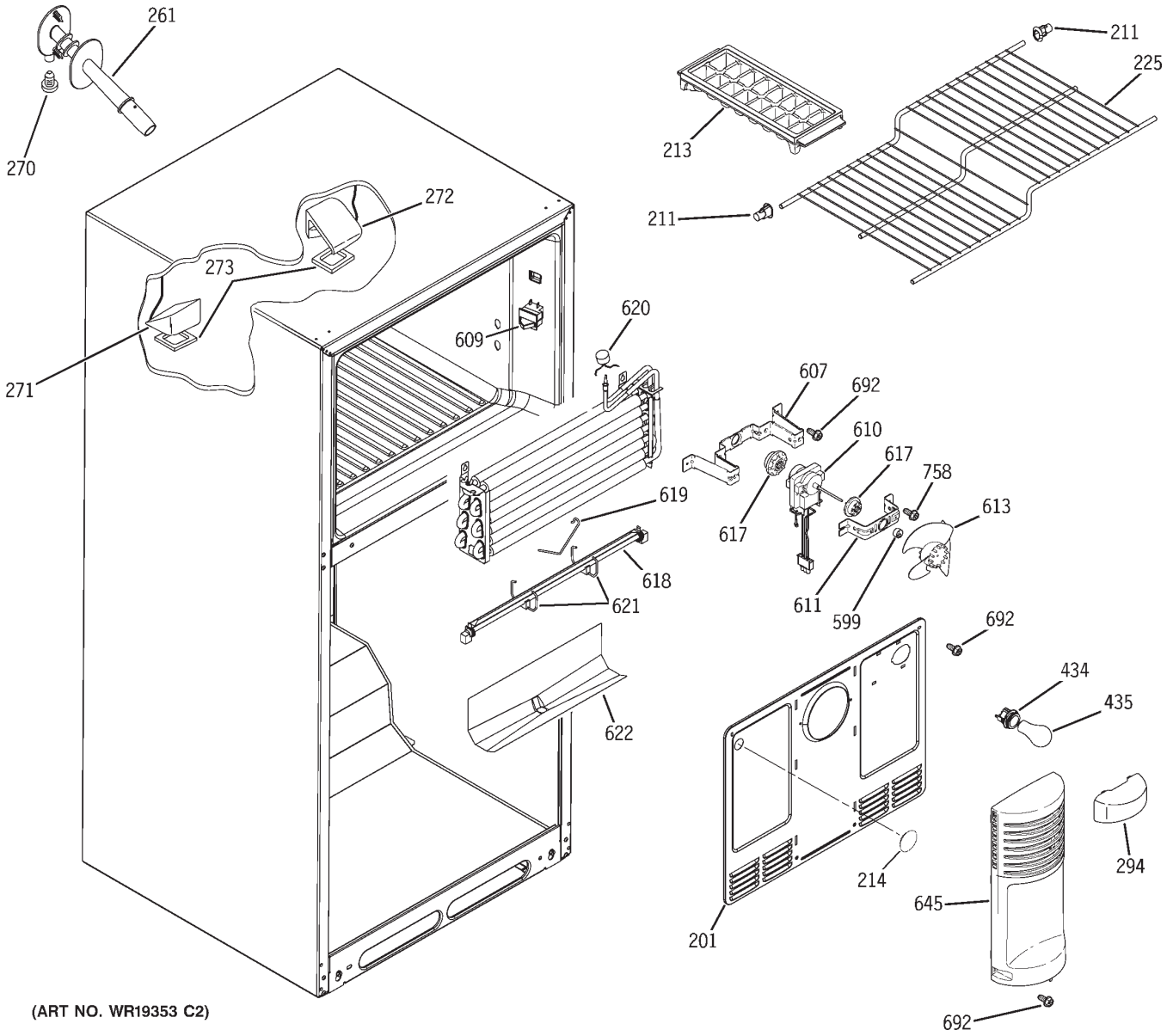
Caution: On all painted appliance surfaces, do not use a kitchen towel that has been previously used for kitchen cleaning without first being washed. Bacteria from the previously used towel will be deposited on the surface of the appliance and will deteriorate the finish.

Illustrated Parts Catalog

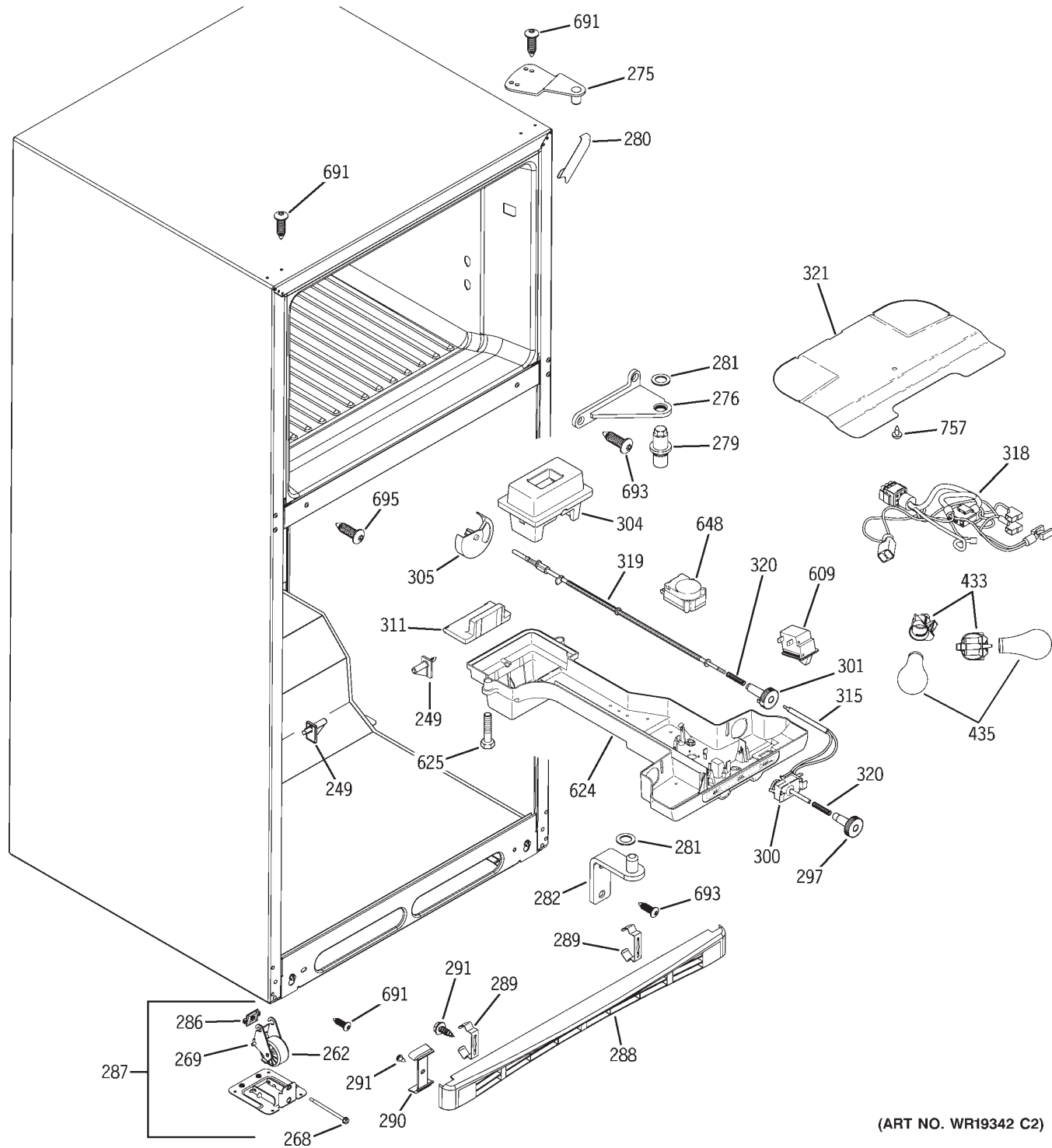
This Illustrated Parts Catalog depicts the GTH18. Other models are similar.



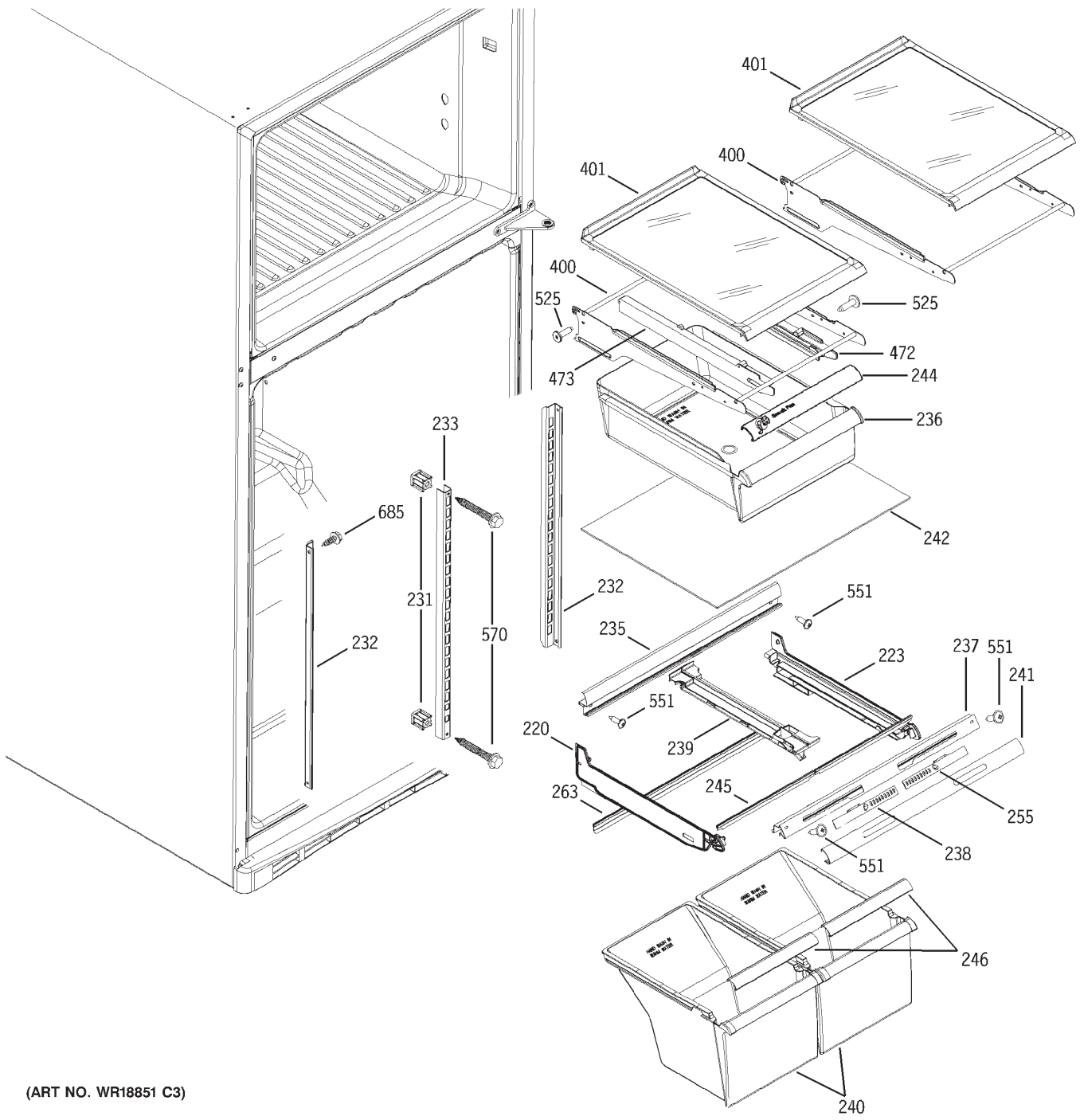
(ART NO. WR19340 C)



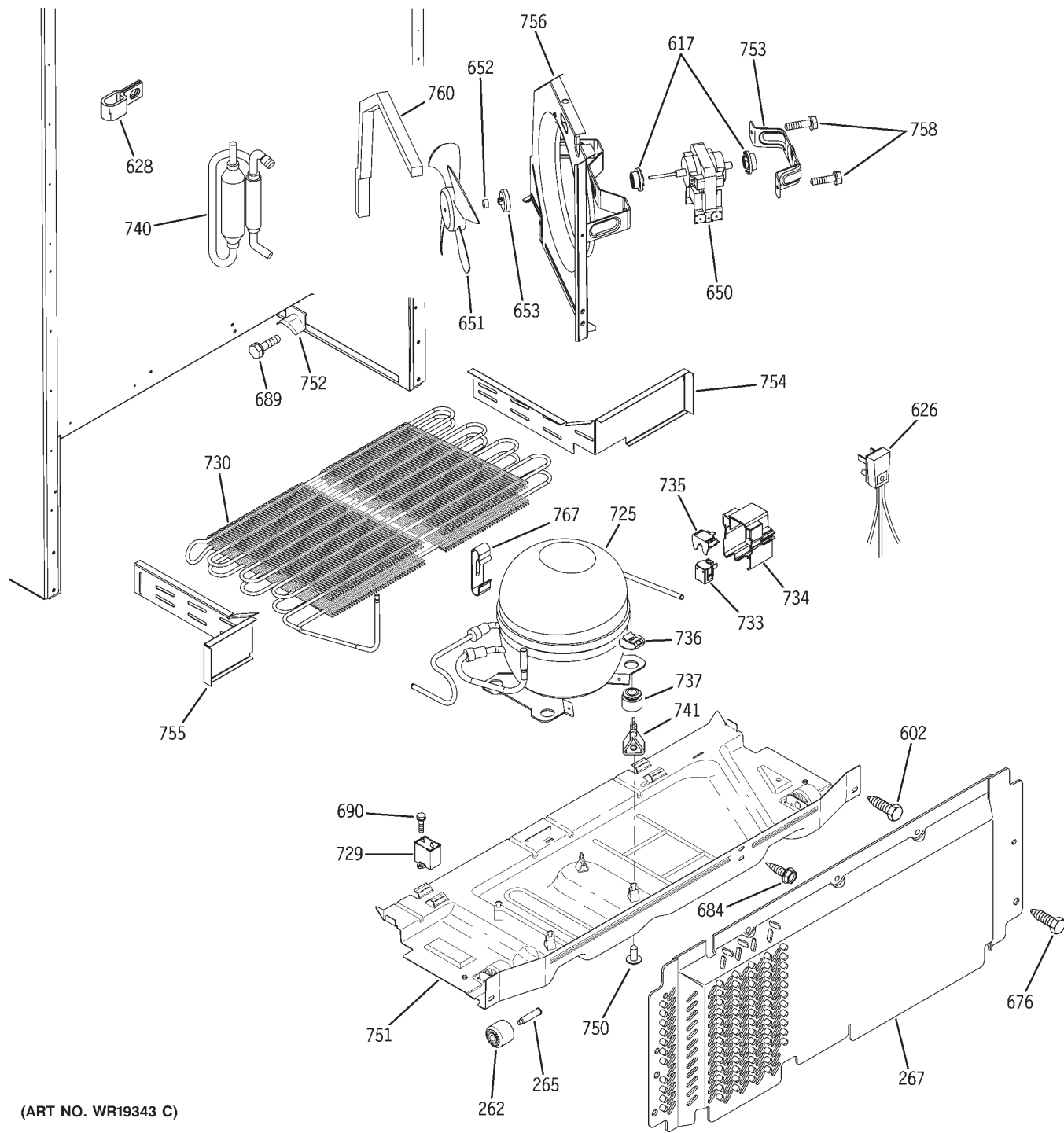
(ART NO. WR19353 C2)



(ART NO. WR19342 C2)



(ART NO. WR18851 C3)



(ART NO. WR19343 C)

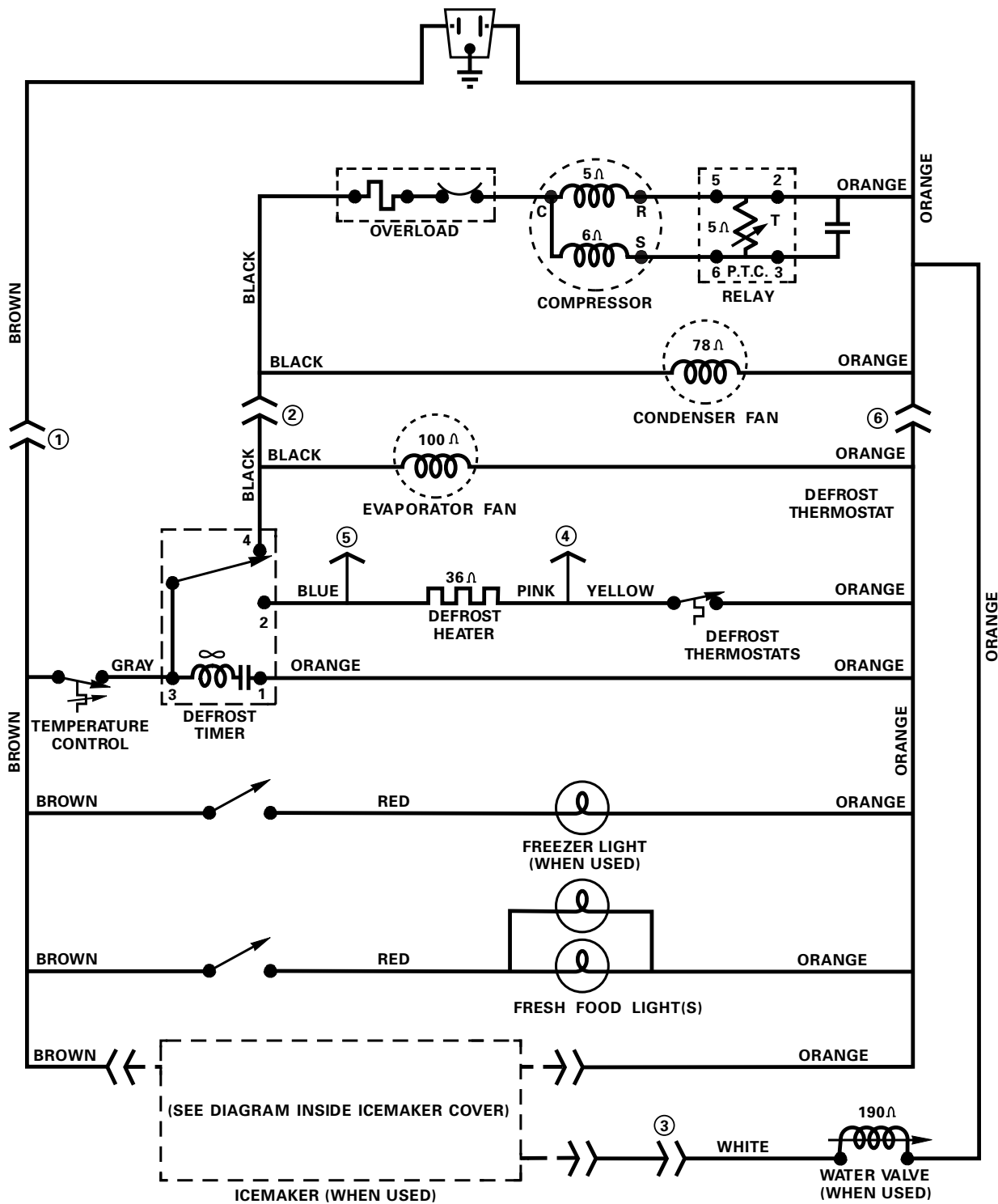
VIEW NUMBER	DRAWING NUMBER	CATALOG NUMBER	DESCRIPTION	QUANTITY
1	197D3168P008	31-51476	PM MINI MANUAL WIRING	1
1	197D3354P004	49-60247	PM GUIDE OWNERS	1
2	197D4855G013	WR12X10611	PK HANDLE SMALL ASM WW	1
2	SUBSTITUTE	WR12X10631	PK HANDLE SMALL ASM WW	1
7	197D1586G055	WR12X10610	HANDLE ASM FZ WW	1
7	SUBSTITUTE	WR12X10411	HANDLE ASM FZ WW	1
11	197D5236P001	WR12X10612	HANDLE DOOR FF WW	1
11	SUBSTITUTE	WR12X10412	HANDLE DOOR FF WW	1
18	8911202P206	WR01X1726	SCR 10-16 AB 3/4 SS	7
18	SUBSTITUTE	WR1X1726D	SCR 10-16 AB 3/4 SS	7
23	197D2784P003	WR24X10095	GASKET DOOR FZ	1
24	203C5697P003	WR02X10740	STOP DOOR FF	1
26	203C5697P004	WR02X10767	STOP DOOR FZ	1
29	203C2549P001	WR02X8087	PLUG BUTTON INSERT WH	1
35	203C5267P004	WR04X10028	LENS NAMEPLATE WH	1
36	203C5789P001	WR02X10713	CAP DOOR CORNER WH	3
37	203C5790P001	WR02X10715	CAP DOOR CORNER WH	3
38	203C5843P001	WR02X10716	CAP DOOR CORNER WH	1
39	203C5844P001	WR02X10714	CAP DOOR CORNER WH	1
104	197D2783P003	WR24X10094	GASKET DOOR FF	1
106	197D2562P001	WR22X10024	DOOR DIARY CLEAR	1
107	197D2561P001	WR71X10267	MODULAR DOOR BIN FF	3
109	197D3014P001	WR71X10268	MODULAR DOOR BIN FZ	2
112	203C3755P001	WR02X8693	PLUG DOOR RVSBL WH	7
124	197D1438P001	WR12X10129	PLUG BUTTON HANDLE WH	1
127	197D3137P001	WR71X10270	SHELF FRONT (ONE PIECE)	2
201	197D3220G004	WR17X11520	COVER EVAP ASM	1
211	162D1359P001	WR02X7973	SUPPORT SHELF	8
213	162D4180P003	WR30X0311	TRAY ICE	2
214	464846P61	WR02X7148	PLUG BUTTON	1
220	197D2175P002	WR17X10861	SLIDE VEG PAN SIDE LH	1
223	197D2175P001	WR17X10862	SLIDE VEG PAN SIDE RH	1
225	197D5390P001	WR71X10522	SHELF ASM FZ	1
231	525046P004	WR02X7018	SPACER TRACK	2
232	197D2048P001	WR72X10057	TRACK CANT SIDE	2
233	197D2047P001	WR72X10056	TRACK CANT CENTER	1
235	197D2174P001	WR17X10859	RAIL VEG PAN REAR	1
236	197D2050P005	WR32X10248	PAN SNACK	1
237	197D2173P001	WR17X10858	RAIL VEG PAN FRONT	1
238	197D2176P001	WR17X10856	HUMID CTRL SLIDE VP L.H.	1
239	197D3716P001	WR17X11226	SLIDE COVER CENTER	1
240	197D3668P004	WR32X10250	PAN 1/2 HAMMER HEAD	2
241	197D2177P001	WR17X10865	TRIM FRAME VEG PAN	1
242	203C5549P001	WR32X10163	SHELF CANT GLASS	1
244	197D2403P006	WR17X11328	HANDLE PAN (TRIM) W/ICON	1
245	203C5546P001	WR14X10075	GASKET CVR PAN FRONT	2

VIEW NUMBER	DRAWING NUMBER	CATALOG NUMBER	DESCRIPTION	QUANTITY
246	197D2403P001	WR17X10904	HANDLE PAN (TRIM)	2
249	203C5936P001	WR02X10736	SUPPORT TWIST VP	2
255	197D2176P002	WR17X10857	HUMID CTRL SLIDE VP R.H.	1
261	197D4093G001	WR02X10804	GROMMET WATER FILL ASM	1
262	203C1086P001	WR02X10137	WHEEL MOBILITY BRACKET	4
263	203C5547P001	WR14X10076	GASKET CVR PAN REAR	1
265	203C5384P002	WR01X10039	AXLE WHEEL	2
267	197D2210G004	WR82X10085	COVER ACCESS ASM	1
268	203C6021P001	WR01X10219	SCREW MOBILITY	2
269	243B1814P001	WR01X1803	KEY PIVOT	2
269	SUBSTITUTE	WR01X1733	KEY PIVOT	2
270	464846P48	WR02X8247	PLUG BUTTON WATER FILL	1
271	197D3710G001	WR02X10718	HOOD DUCT FF ASM L/SIDE	1
272	197D3710G002	WR02X10719	HOOD DUCT FF ASM R/SIDE	1
273	197D3738P001	WR14X10077	GASKET HOOD	2
275	197D1972G014	WR13X10101	HINGE TOP & ASM	1
276	197D2422G001	WR13X10139	HINGE CENTER ASM WH	1
279	203C1080P001	WR13X0587	PIN HINGE CTR	1
280	197D2334P001	WR02X10703	CAP CORNER OC WH	2
281	203C2032P010	WR01X10146	WASHER HINGE BROWN	2
282	197D2825G001	WR13X10138	HINGE BTM & PIN ASM WH	1
286	203C2185P002	WR01X1815	LEVELING NUT	2
287	197D3779G001	WR02X10722	MOBILITY ASM	2
288	197D2951P001	WR74X10068	GRILLE BASE WH	1
289	200D2209P001	WR02X10738	CLIP GRILLE	2
290	197D3390P001	WR02X10711	CAP GRILLE BASE WH	1
291	8911201P297	WR01X10221	SCR 8-10 PL PNP 1/2 S	3
294	197D5243P001	WR02X11568	SHIELD LIGHT FZ	1
297	197D5365P001	WR02X11587	KNOB THUMB CONTROL FF	1
297	SUBSTITUTE	WR02X11591	KNOB THUMB CONTROL FF	1
300	197D2495P003	WR09X10110	CONTROL TEMP	1
300	SUBSTITUTE	WR09X10073	CONTROL TEMP	1
301	197D5364P001	WR02X11586	KNOB THUMB CONTROL FZ	1
301	SUBSTITUTE	WR02X11595	KNOB THUMB CONTROL FZ	1
304	197D2942P001	WR02X10723	NOZZLE CONTROL FOAM	1
305	197D5263P001	WR02X11583	WHEEL DAMPER	1
311	197D2943P001	WR02X10709	BLOCK FOAM CONTROL	1
315	197D3754P002	WR02X11006	SLEEVE VINYL	1
318	197D5276G001	WR23X10335	HARNESS CONTROL MODULE	1
319	197D2430P001	WR02X10727	SHAFT DAMPER	1
320	243B2550P001	WR01X10220	SPRING KNOB	2
321	197D5360P001	WR02X11584	SHIELD REFLECTOR FF	1
400	197D2052P001	WR32X10162	SHELF CANT FRAME ASM	3
401	197D2051G001	WR32X10164	SHELF ENCAP SNAP ON	3
433	238C1401P001	WR02X10732	SOCKET STRAIGHT LIGHT FF	1
434	197D3796G001	WR02X10591	SOCKET & TERMINAL	1

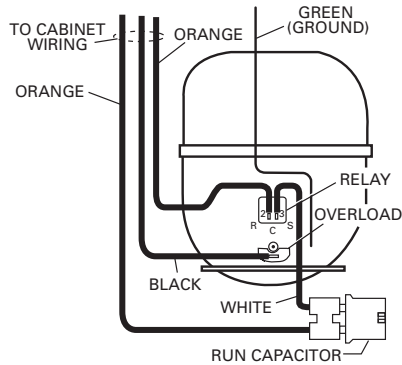
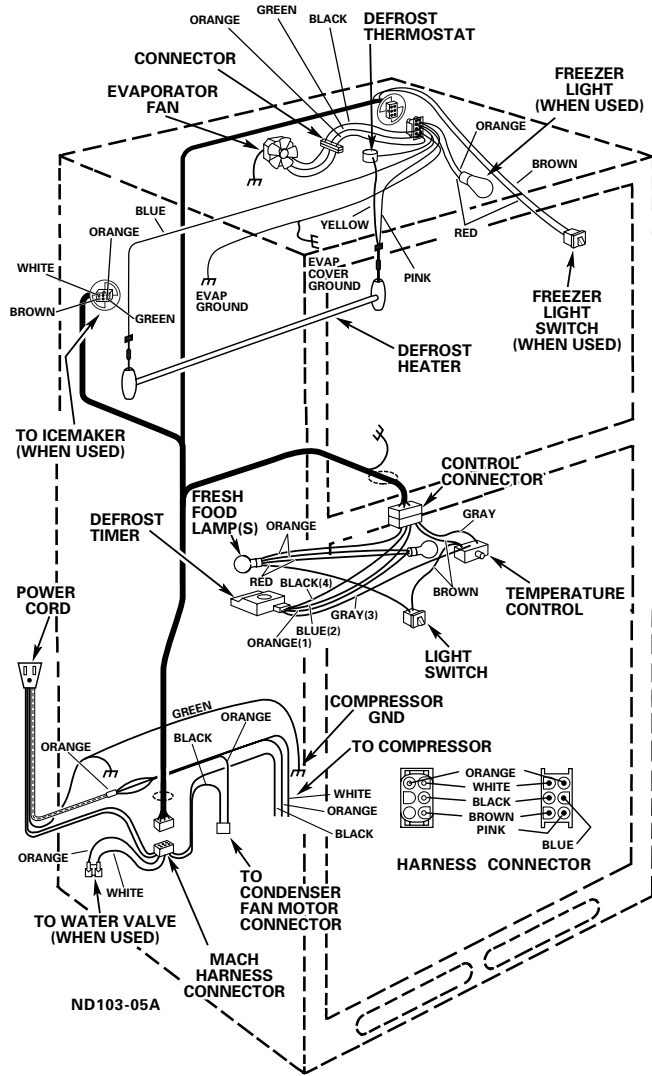
VIEW NUMBER	DRAWING NUMBER	CATALOG NUMBER	DESCRIPTION	QUANTITY
435	866354P021	STD372402	LAMP 40W 120V	3
435	SUBSTITUTE	40A15	LAMP 40W 120V	3
472	197D2539P003	WR72X10086	SLIDE SNACK PAN	1
473	197D2539P002	WR72X10055	SLIDE SNACK PAN LH	1
525	203C3277P001	WR01X1763	SCR 8-18 T WAFER 5/8	6
525	SUBSTITUTE	WR1X1763D	SCR 8-18 T WAFER 5/8	6
551	8911201P39	WZ04X0244	SCR 8-18 AB RNDW 5/8 SS	4
551	SUBSTITUTE	WZ4X244D	SCR 8-18 AB RNDW 5/8 SS	4
566	203C1632P001	WR01X1728	SCR 10-16 1/2 PH	4
570	8911201P212	WR01X1757	SCR 8-18 HXW 1 1/4S	4
599	868328P007	WR02X10509	RING COMPRESSION FAN	1
602	8911204P023	WR01X1591	SCR 1/4-14 X 3/4	2
435	SUBSTITUTE	40A15	LAMP 40W 120V	3
607	197D5230P001	WR02X11582	BRACKET EVAP FAN	1
609	197D2805P001	WR23X10143	SWITCH LIGHT	2
610	197D3957P002	WR60X10117	MOTOR EVAPORATOR FAN	1
611	197D4120P001	WR02X10762	BRACKET EVAP FAN MTG	1
613	197D2409P003	WR60X10055	BLADE EVAP FAN	1
613	197D3131G002	WR60X10055	BLADE EVAP FAN ASM	1
617	238C2332P003	WR02X11585	GROMMET EVAP FAN BLUE	4
618	522979G057	WR51X10038	HEATER DEF ASM	1
619	203C5692P002	WR51X10046	CONDUCTOR HEAT	1
620	197D3382P002	WR50X10025	THERMOSTAT DEF	1
621	203C5540P001	WR02X10518	HOLDER ELEMENT	1
622	197D2966P001	WR17X10866	TROUGH DRAIN	1
624	197D5590G001	WR17X11537	HOUSING CTL INSERT ASM	1
625	8911201P422	WR01X10425	SCR 8-18 HI/LO HXW 7/8S	2
626	8911426G028	WR23X10300	CORD POWER ASM	1
628	130035P02	WR01X5278	CLAMP CABLE	1
645	197D5133P001	WR17X11521	TOWER BOTTOM FZ	1
648	162D6022P028	WR09X10041	CONTROL DEFROST	1
650	197D1871P012	WR60X10044	MOTOR COND FAN	1
651	197D1975G004	WR60X10088	BLADE COND FAN ASM	1
652	868328P006	WR02X10323	RING COMPRESSION	1
653	203C5482P002	WR02X10322	CAP DUST	2
676	8911202P204	WZ04X0263	SCR 10-16 AB HXW 1/2	4
676	SUBSTITUTE	WD02X5166	SCR 10-16 AB HXW 1/2	4
684	8911212P130	WB01T10047	SCR 8-32 X .625 M HXW S	2
685	8911201P224	WR01X1804	SCR 8-18 AB HXW 3/4 WH	2
685	8911201P328	WR01X1804	SCR 8-18 AB HXW 1/2 WH	4
689	868803P49	WZ05X0246	SCR 8-32 SPEC DRILL PT	4
690	8911212P15	WR01X1466	SCR 8-32 T HXW 3/8 S	2
690	SUBSTITUTE	WZ5X158D	SCR 8-32 T HXW 3/8 S	2
691	203C1006P005	WR01X2138	SCREW 12-24 .7 WH	8
692	8911201P186	WZ04X0416	SCREW	10
693	203C1005P004	WR01X2136	SCREW 12-24 .9 WH	2

VIEW NUMBER	DRAWING NUMBER	CATALOG NUMBER	DESCRIPTION	QUANTITY
695	8911214P018	WR01X10218	SCR 12-24 TT BHT 20 .73S	6
725	197D4821G001	WR87X10043	COMPRESSOR REPL KIT	1
725	SUBSTITUTE	WR87X10095	COMPRESSOR REPL KIT	1
726	197D2148G002	WR85X10024	LOW SIDE ASM	1
726	SUBSTITUTE	WR85X10037	LOW SIDE ASM	1
729	203C2799P005	WR62X0080	CAPACITOR	1
730	197D1209G006	WR84X10052	CONDENSER ASM S/L 3/16	1
733	203C2386P001	WR07X0194	RELAY	1
734	197D4823P001	WR02X11436	COVER RELAY SNAP EMBRACO	1
735	203C2385P075	WR08X10046	OVERLOAD	1
736	132264P02	WR02X8583	CLIP COMP MTNG	4
737	650019P02	WR02X7238	GROMMET COMP MTG	4
740	162D9086P006	WR86X0096	DRYER BIFURCATED XH9	1
741	203C3269P001	WR01X1779	STUD MTG COMPR	4
750	243B1499P002	WR01X1786	SCR 10-32 TR 1/2	4
751	197D3388G002	WR17X11527	BPLATE STUD & WHEEL ASSY	1
752	203C5249P001	WR17X10317	SUPPORT HIGH SIDE	2
753	197D1328P003	WR02X10321	BRACKET EVAP FAN	1
754	197D3438P001	WR17X10847	BAFFLE COND LH	1
755	197D3437P001	WR17X10848	BAFFLE COND RH	1
756	197D3380P002	WR17X10854	HOUSING COND FAN	1
757	203C4510P001	WR01X2035	FASTENER PUSH	1
758	8911212P159	WD02X0323	SCREW 8-32 X 3/8 SPH	4
760	870963P167	WR14X10081	FOAM STRIP SE ADH	1
767	203C4354P003	WR02X10712	CLIP COND (DL)	1
900	197D2629G001	WR78X10382	DOOR FOAM ASM FZ WH	1
910	197D2628G001	WR78X10383	DOOR FOAM ASM FF WH	1
921	203C5545P001	WR02X10724	PLUG DOOR THIMBLE WH	4

Schematic



Wiring Diagram



Warranty

All warranty service provided by our Factory Service Centers, or an authorized Customer Care® technician. To schedule service, on-line, 24 hours a day, visit us at www.Hotpoint.com, or call 800.GE.CARES (800.432.2737).

What Is Covered:

For The Period Of:

We Will Replace:

One Year

From the date of the original purchase:

Any part of the refrigerator which fails due to a defect in materials or workmanship. During this **full one-year warranty**, we will also provide, **free of charge**, all labor and in-home service to replace the defective part.

Five Years

From the date of the original purchase:

Any part of the sealed refrigerating system (the compressor, condenser, evaporator and all connecting tubing), which fails due to a defect in materials or workmanship. During this **full five-year sealed refrigerating system warranty**, we will also provide, **free of charge**, all labor and in-home service to replace the defective part.

What Is Not Covered:

- Service trips to your home to teach you how to use the product.
- Replacement of home fuses or resetting of circuit breakers.
- Incidental or consequential damage caused by possible defects with this appliance.
- Replacement of the light bulbs.
- Damage to the product caused by accident, fire, floods or acts of God.
- Failure of the product if it is abused, misused, or used for other than its intended purpose or used commercially.
- Improper installation, delivery or maintenance.
- Loss of food due to spoilage.
- Damage caused after delivery.

This warranty is extended to the original purchaser and any succeeding owner for products purchased for ordinary home use within the USA. In Alaska the warranty excludes the cost of shipping or service calls to your home.

Some states do not allow the exclusion or limitation of incidental or consequential damages, so the above limitation or exclusion may not apply to you. This warranty gives you specific legal rights, and you may also have other rights which vary from state to state.

To know what your legal rights are in your state, consult your local or state consumer affairs office or your state's Attorney General.

Warrantor: General Electrical Company. Louisville, KY 40225